

# VOLKS HAUS

## VENUE SPECIFICATIONS THEATERSAAL

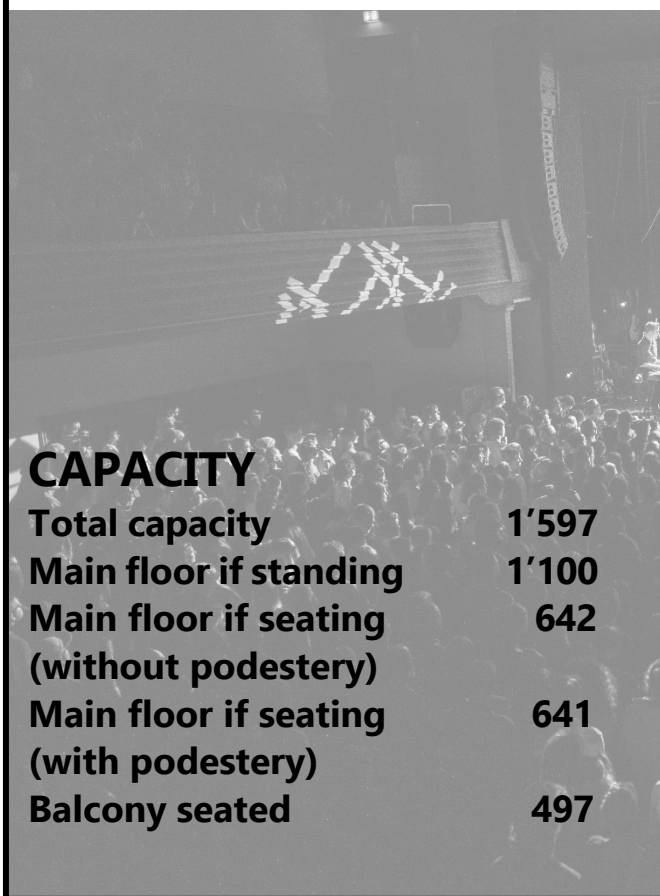


Stauffacherstrasse 60  
8004 Zürich

Tel.: +41 44 241 64 04  
Mail: [info@volkshaus.ch](mailto:info@volkshaus.ch)  
Web: [www.volkshaus.ch](http://www.volkshaus.ch)

# ZÜRICH

**The Volkshaus is located in downtown Zürich at the Helvetiaplatz, approx. 10 min. walking distance from the main train station Zürich HB.**



**CAPACITY**

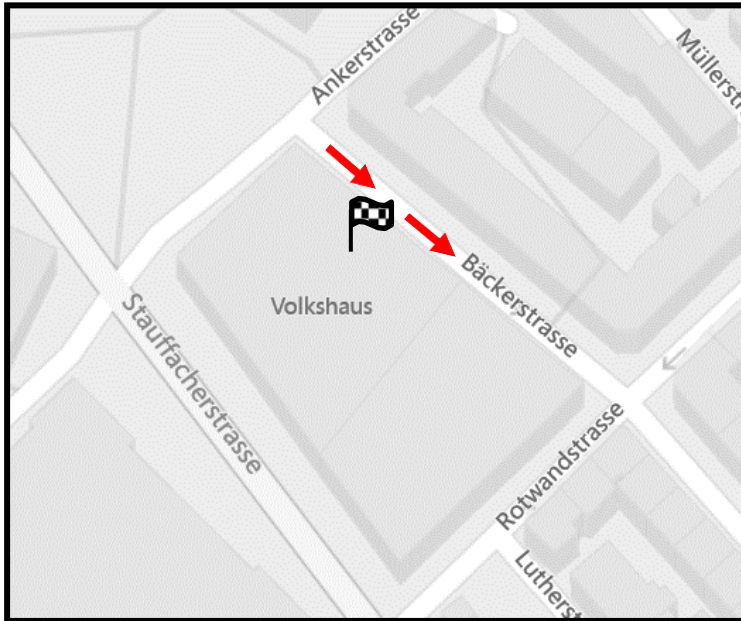
<b>Total capacity</b>	<b>1'597</b>
<b>Main floor if standing</b>	<b>1'100</b>
<b>Main floor if seating (without podestery)</b>	<b>642</b>
<b>Main floor if seating (with podestery)</b>	<b>641</b>
<b>Balcony seated</b>	<b>497</b>



## Index

1.	How to get to the Venue .....	3
2.	Parking .....	4
3.	Load In/ load out.....	5
4.	Stage.....	6
5.	Power .....	7
6.	Rigging.....	8
7.	PA specs.....	9
8.	Audio .....	10
9.	Microphone .....	11
10.	Light.....	12
11.	Video .....	13
12.	FOH.....	13
13.	Special effects .....	13
14.	Dressing rooms.....	14
15.	Catering .....	15
16.	Theatersaal .....	16
17.	Personnel allocation .....	17
18.	Merchandise.....	18
19.	Diverses/ House specifications.....	18
20.	Impression.....	19

# 1. HOW TO GET TO THE VENUE



To get to the backstage entrance and the load-in, use this navi address:

**Bäckerstrasse 57**  
**8004 Zürich**  
**Switzerland**

Link: [Google maps - Bäckerstrasse 57](#)

Please note, the Bäckerstrasse is a one-way street as you see on the map.

## Federal decree of Switzerland

Permits for trucks (not busses) are required for the following time:

MON to SAT: 10.00 PM – 05.00 AM

SUN: all day long

The local promoter, not the Volkshaus, will organize a permission for the truck drivers, so please send all details at least two weeks before the show.

Link: [Apply for the permission for the truck driver](#)



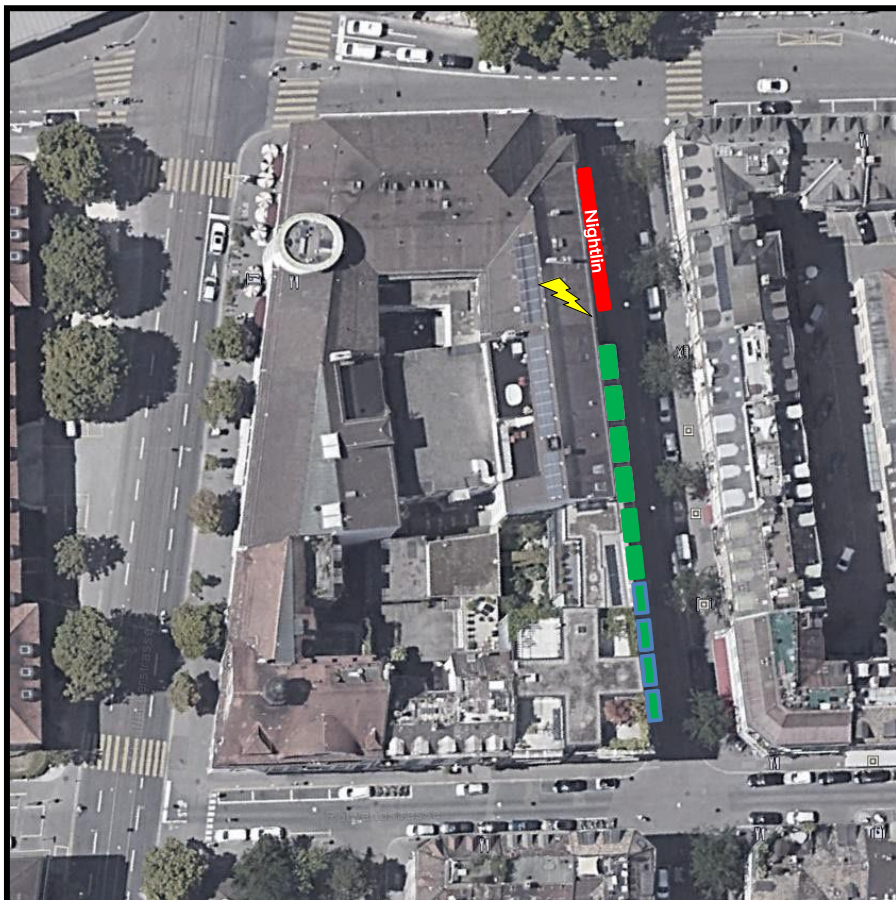
## 2. PARKING

### Truck and bus parking:

There is 76 m max. space for all vehicles at the venue. You can find the details on the map.

The local promoter needs to know the exact number of vehicles to apply for the permit.

Please note that productions with more vehicles have to park some of the vehicles offside (not at the venue).



- █ Nightliner, Trailer (20m)  
Truck parking & Load-In
- ⚡ Nightliner power: 2 x 32 A CEE  
1 x 16 A CEE
- █ Parking for Truck, Vans or Cars  
(in total 36m)
- █ Parking (20m)

### IMPORTANT

Due to neighbour complaints, the venue has issued a strict rule that all nightliners MUST be parked at the far end of the parking zone, with the rear as close to the corner of Ankerstrasse/Bäckerstrasse as possible.

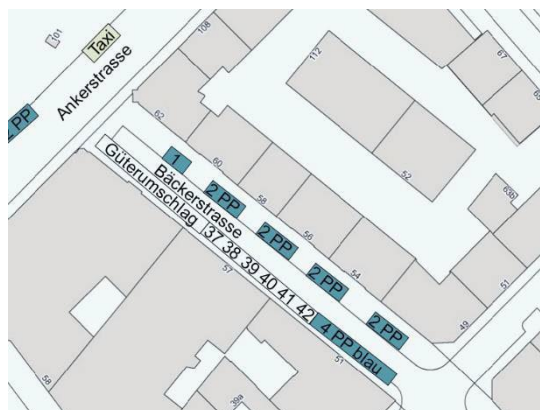
Thank you very much for your cooperation!

The parking area must be applied at the police station at least 2 weeks before the show.

This must be organized by the local promoter.

If there is a problem with the blocked parking zone at the time the nightliner arrives, please call the police directly.

Contact: Police station Zürich  
Phone +41 (0)44 411 60 40  
stp-kreischef-4@zuerich.ch



### 3. LOAD IN/ LOAD OUT

#### Load in

##### At Bäckerstrasse 57, 8004 Zürich (backstage entrance)

- 8 m flat push to stage without stairs then hydraulic lift at the front of the stage

##### Door details:

width 1.40 m, height 2.08 m

##### Lift details:

width 10.60 m, depth 2.40 m, (max. 5'000 kg)

- One truck at the same time

#### Load out

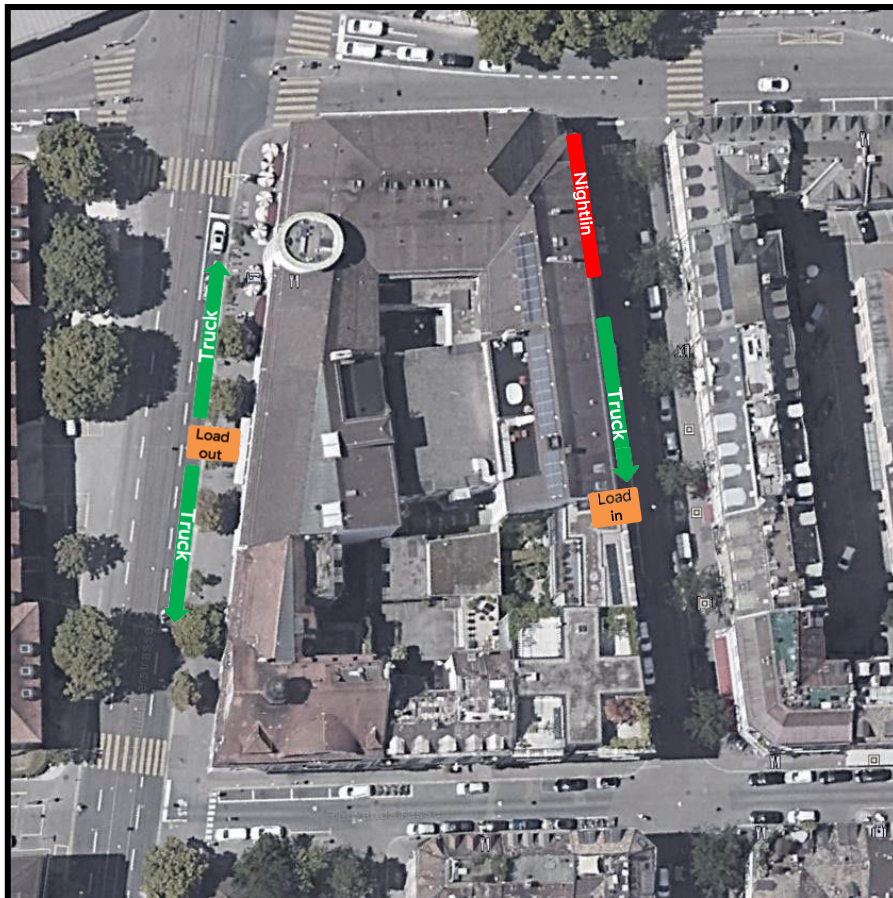
##### After 10.00 PM at Stauffacherstrasse (main entrance)

- 30 m straight push without stairs, using the hydraulic lift in front of the stage

##### Door details:

width 1.48 m, height 2.59 m

- Two trucks at the same time, parking back to back on the street
- Load out dock is built by the venue



## 4. STAGE

### STAGING SYSTEM

Fix stage

Width	9,20 m in proscenium 16,00 m behind proscenium
Depth	8,90 m without fore stage section
Height	1,15 m
Clearance	5,25 m at proscenium 9,00 m behind proscenium

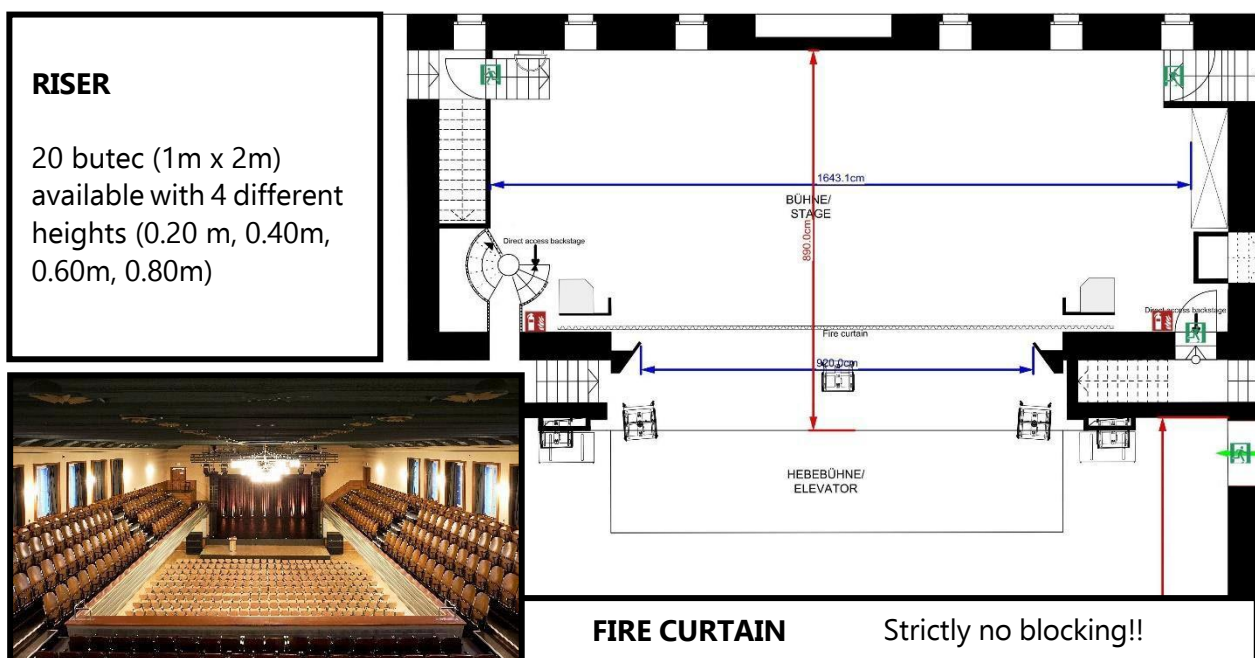
### FORESTAGE

Width	10,60 m
Depth	2,40 m
Height	0,00 – 1,15 m (flexible)

### HYDRAULIC ELEVATOR

can be placed on 3 (three) levels:  
- stage  
- ground floor  
- backstage level

Maximum load 5'000 kg



### STORAGE

All backline cases can be stored under the stage. Use the elevator to bring the cases down on -2nd floor.  
Door details: width 2.20m and height 1.98 m



## 5. POWER

### General power information

All power is 220 / 380 V / 50 Hz  
The power supplies all downstage right

### Lighting power

Main fuse

3 x 250 A CEE (3P) maximum

Lighting power split and connections

2 x 125 A CEE (3P)  
2 x 63 A CEE (3P)  
1 x 32 A CEE (3P)  
3 x 16 A CEE (3P)  
1 x 250 A CEE (3P) Powerlock tails / lugs  
Lighting power location all downstage right

### Sound power

Main fuse

3 x 75 A CEE (3P) maximum

Sound power split and connections

1 x 63 A CEE (3P)  
2 x 32 A CEE (3P)  
1 x 16 A CEE (3P)



### Nightliner power

2 x 32 A CEE  
1 x 16 A CEE



## 6. RIGGING

Clearance

5.25 m at proscenium  
9.00 m behind proscenium

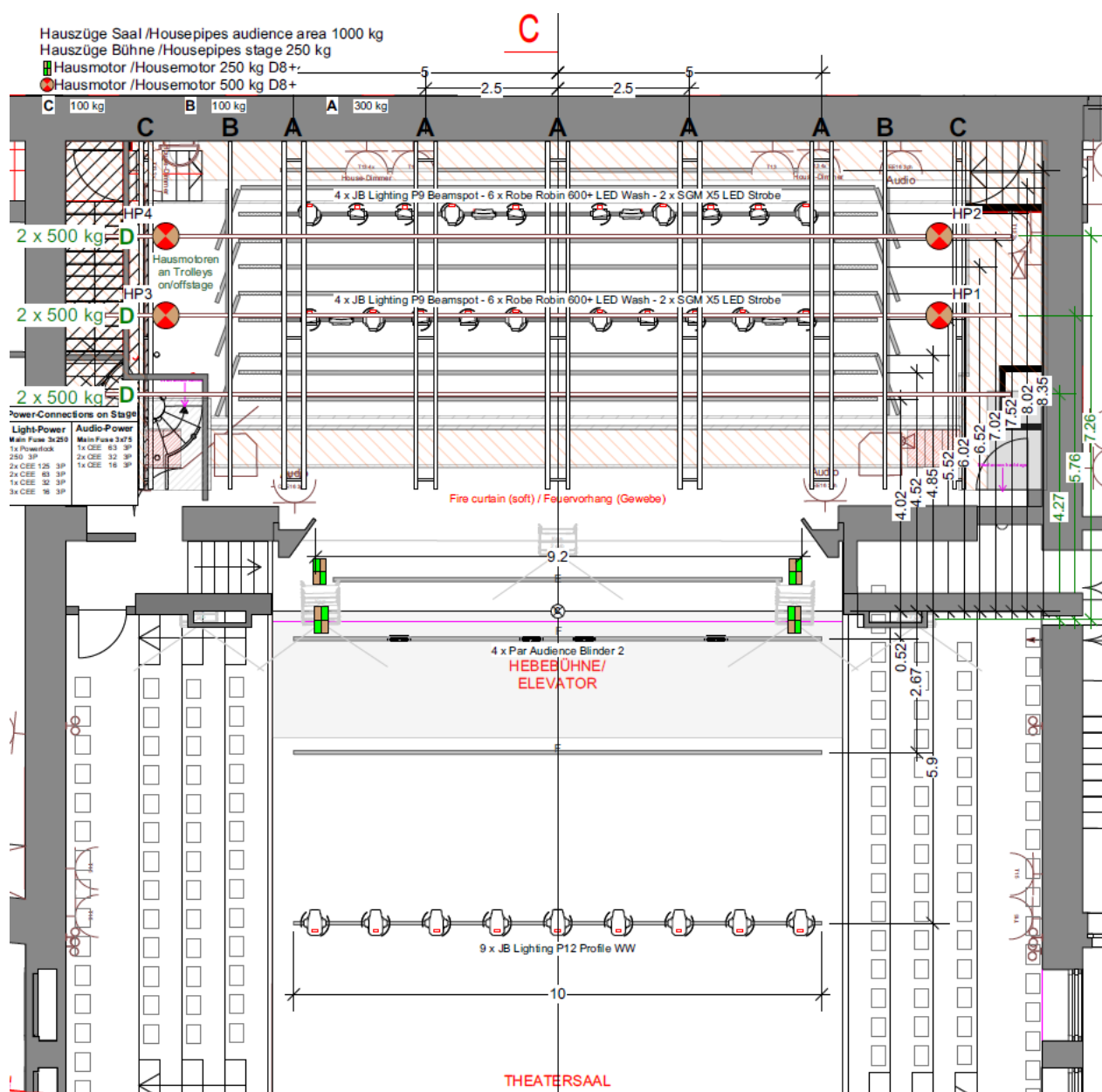
### Stage section:

3 x metal T-beams 500 kg per bar with motor  
Distances from backwall: 1.85 m / 3.15 m / 4.65 m

7 x theatre style bars 250 kg per bar  
Ø 70 mm, adapter available Ø 50 mm

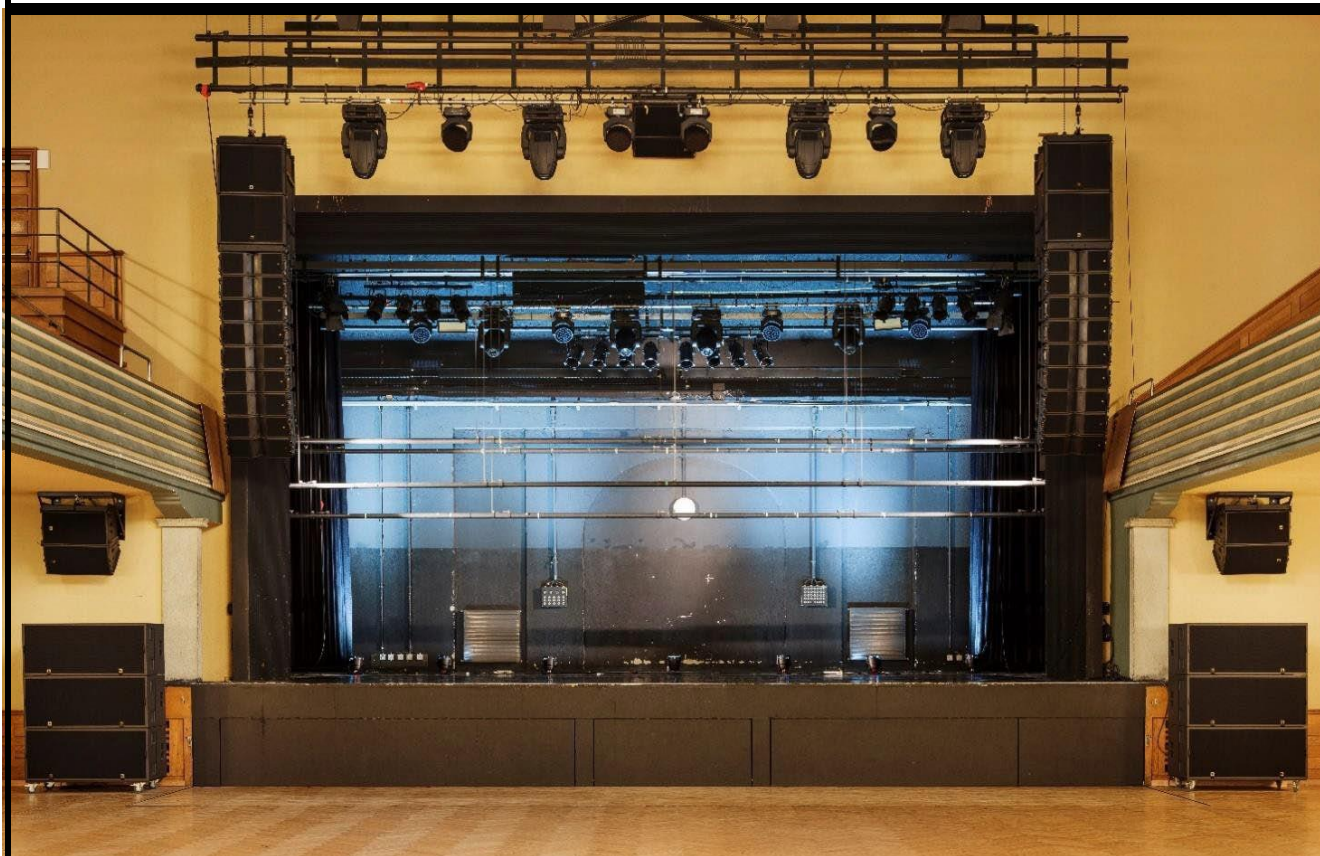
### Downstage:

4 bars, max 1'000 kg per bar  
Ø 70 mm, adapter available Ø 50 mm



## 7. PA SPECS

The in house line array is not removable.  
It is required to use our PA system.



Main PA	18	L-Acoustics Kara 2-Way Modular WST
	4	L-Acoustics SB18 High Power Compact Subwoofer
Subs	6	L-Acoustics SB28 High Power Subwoofer
Center fill	2	L-Acoustics Arcs Wide WST Linesource
Under balcony	4	L-Acoustics Arcs Wide WST Linesource
Amping	1	All speakers driven with LA8
Matrix	1	L-Acoustics LA P1 Measurement Platform
Connectors	3	Stage left: XLR Analog: left, right, sub
	2	Stage left: XLR AES/EBU: left, right, sub

# 8. AUDIO

## F.O.H. - Monitor Desks

- 1 Console Midas Heritage D / HD96-24-CC-TP
- 1 Console Midas Pro 2

## Stagebox

- 1 Midas Stagebox DI251 inkl. Sub Muco  
Digital: 48 In / 16 Out  
Analog: 40 In / 8 Out
- 1 Fan Out, 40/16 Neutrik
- 2 12 Channel Sub Muco Independent
- 2 12 Channell Sub Muco with Stage-box DI251

## Intercom

- 1 ASL Masterstation
- 6 6x ASL PS19A beltpack
- 6 6x ASL Headset

## Monitoring

- Wedges 10 PL-AUDIO M15 CX  
Monitorbox 900-1200 W
- Drumfills 2 EV ELX 118 P  
2 Drumfills EV ELX 115 P
- Sidefills 2 L-Acoustics A15 Wide  
2 L-Acoustics KS21

## Multicore-System

Audio Hybrid Multicore 60m

- 2 Audio convertCON XLR
- 2 Cat5 etherCON
- 1 Netz T13 (Shuko)

## Akustikanalyzer

- 1 NTI Audio XL 2 M2211

**IMPORTANT**

**No Soundcheck before 5:00 PM.**

## Federal decree of Switzerland

Sound level limitations:

Events with a sound level between 93 and 96 decibels must be reported to the authorities.

Events with a sound level between 96 and 100 decibels must be reported to the authorities AND recorded/documentated.

Link for further information: [Schall- und Laserverordnung](#)



## 9. MICROPHONE

### Microphones

8	Shure SM 58
2	Shure Beta 58A
5	Sennheiser 935
6	Shure SM 57
2	Shure Beta 57A
1	Shure Beta 52A
1	Shure Beta 91
2	AKG D112
4	Sennheiser E904
1	Sennheiser E906
1	Sennheiser E609
2	Sennheiser Black Fire
3	AKG C5600 Condenser
3	AKG C3000 Condenser
4	AT 5100AE Condenser
1	AKG SE300b Condenser
1	EV RE20
4	Sennheiser MD441-4
1	AT M250DE
2	Audix clip-on for wind instruments
1	Shure SM86

### Mic Stands

9	K&M stand small
15	K&M stand big

### D.I.

8	Clark DN100 Aktive D.I.
7	BSS D.I. Box AR-133

### Wireless

9	Sennheiser EW 500 G4
9	Sennheiser SKM 300 G4 Handheld e935
9	Sennheiser SK 300 G4 Bodypack
9	Sennheiser HSP 4 Headset

### Backline

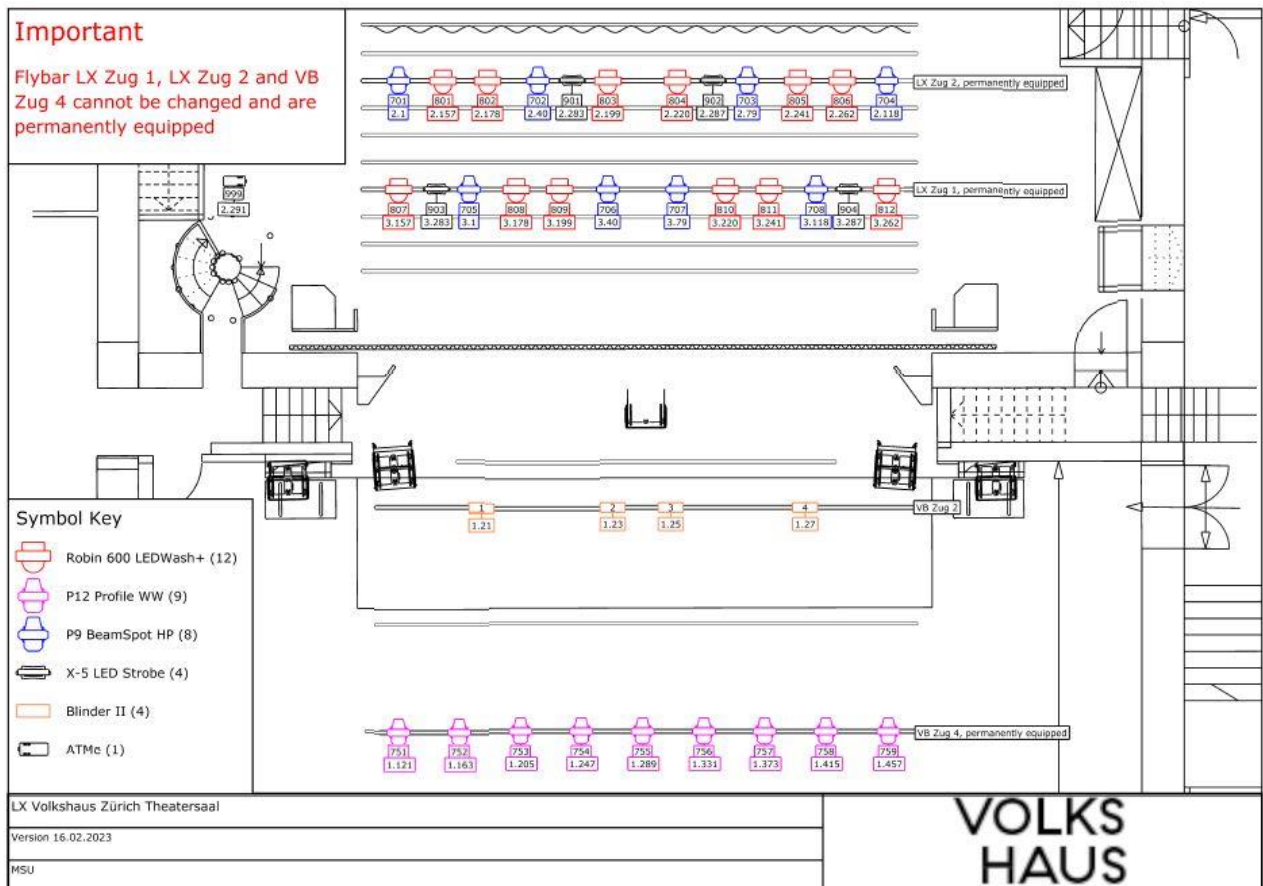
Grand Piano Steinway D      Can be tuned by the house with additional costs



# 10. LIGHT

# VOLKS HAUS

<b>Lighting desk</b>	1	Avolites Titan Quartz	<b>Follow Spot</b>	2	Robert Julliat 600W LED (Position is in the balcony)
	1	Avolites Titan Mobile Wing		<b>Smoke Machine</b>	1
<b>Front lighting</b> fixed installation	9	JB Lighting P12 Profile WW	<b>Wind-Up Stativ</b>		2
	<b>Back lighting</b> fixed installation	8		JB Lighting P9 Beamspot	<b>Work Platform</b>
12		Robe Robin 600+ LEDWash	1	Genie AWP-30S	
4		SGM X-5 LED Strobe	<b>Dimmer Rack</b>	1	ADB 120 x 2,5 KW
4		Par Audience Blinder 2			
Flexible lighting	16	LED Par 64 RGBW ACL			
	4	Par64			
	5	Vintage Bowl Stairville LED Vintage 50 RGBA			



## 11. VIDEO

<b>Projector</b>	1	Panasonic PT-MZ770EJ LCD LED / Laser 8000 ANSI Resolution: 1920 x 1200 Pixels
<b>Screens</b>	1	Stumpfl 6,50 m x 3,50 m
	1	Roll-up screen 8,00 m x 6,00 m (fixed installation)
<b>Accessory</b>	1	HDMI 2.0 Active Optical Cable 50m

## 12. FOH

<b>Standard FOH position</b>	Production sensitive, but normally just in front of balcony overhang on the main floor
<b>Cable run</b>	Approx. 70 m cable from stage, along the balcony down to the FOH on the main floor
<b>FOH size</b>	Production sensitive but normally around 3m x 3m
<b>Do seats get lost</b>	Yes, the number of lost seats depend on the FOH size

## 13. SPECIAL EFFECTS

**Pyro effects** Must be approved by the local fire police.  
Please send all documents necessary including operator licenses to the promoter at least 21 days before the show.

Contact: Crazy flash GmbH  
Erich Frey  
Baldeggstrasse 20  
CH - 6280 Hochdorf

Email: info@crazyflash.ch  
Phone: +41 41 455 40 00

**Laser effects** Mandatory to notify.

### Federal decree of Switzerland

As of December 1, 2020, the federally recognized certificate of expertise or the federally recognized certificate of expertise is mandatory for laser shows.

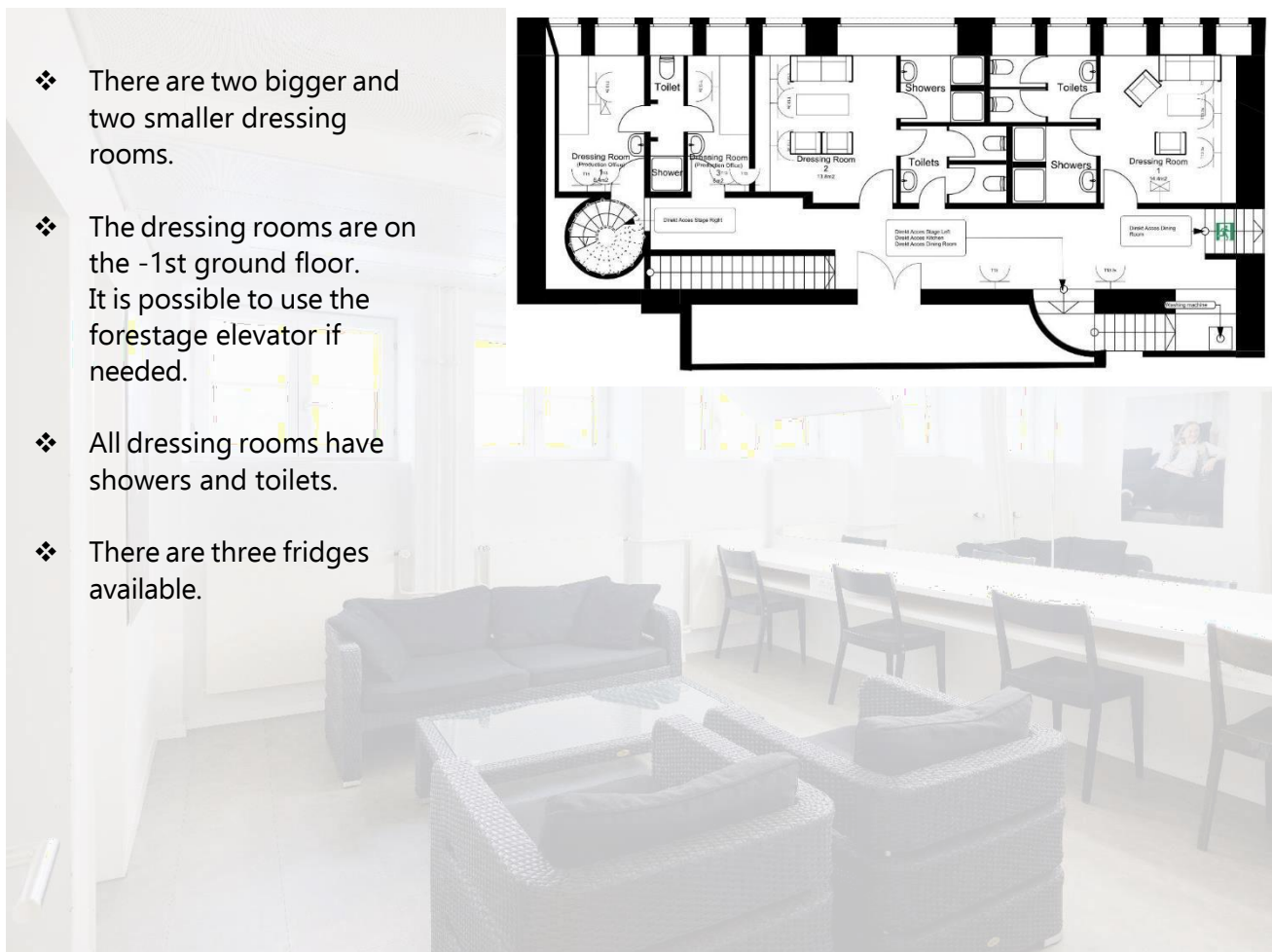
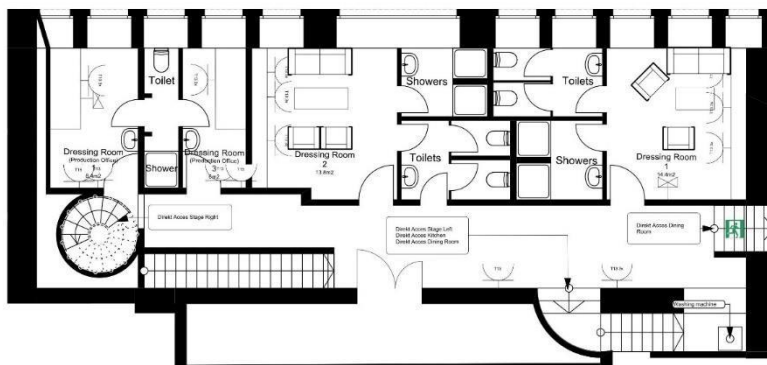
The V-NISSG (Ordinance to the Federal Law on Protection against Hazards due to Non-Ionizing Radiation and Sound) replaces the SLV (Sound and Laser Ordinance) and came into force on June 1, 2019.

The new ordinance provides for a nationwide qualification and certification of specialists who install, commission and operate laser equipment of classes 1M, 2M, 3R, 3B or 4.

Link: [Lasershows](#)

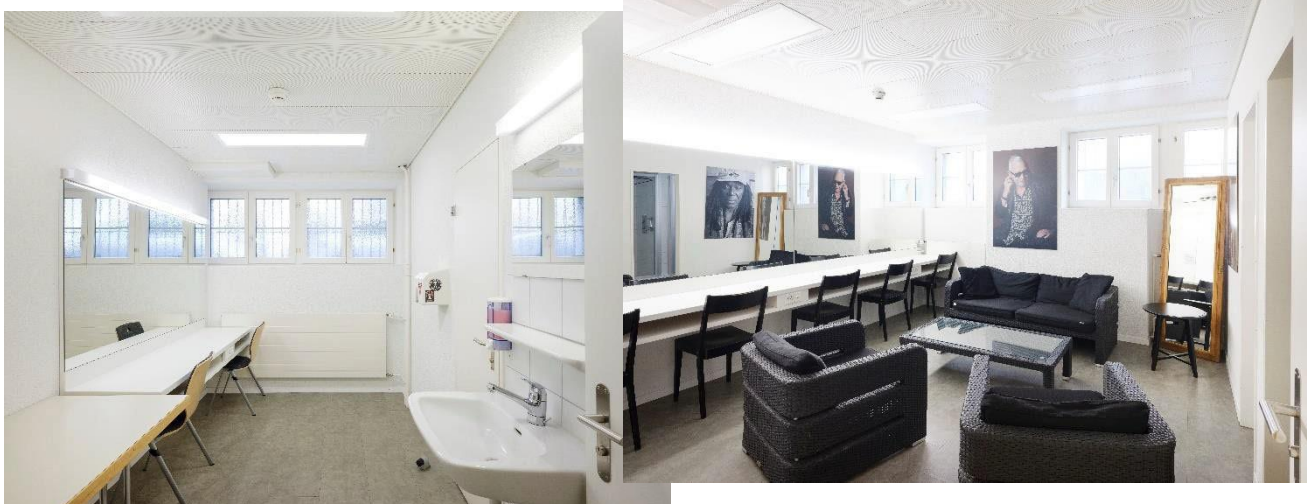
## 14. DRESSING ROOMS

- ❖ There are two bigger and two smaller dressing rooms.
- ❖ The dressing rooms are on the -1st ground floor. It is possible to use the forestage elevator if needed.
- ❖ All dressing rooms have showers and toilets.
- ❖ There are three fridges available.



**Iron and ironing board**

Available at the venue



# 15. CATERING

## Local Catering

Restaurant Volkshaus

Information Bankett, Events und Konzerte

Phone : +41 (0)44 245 85 58

Email : [anlass@restaurantvolkshaus.ch](mailto:anlass@restaurantvolkshaus.ch)

Link : [Restaurant Volkshaus](#)

## Kitchen for tour catering

Is located on the 1st floor. Two floors above the dressing room area.

Rental costs CHF 500.- (all included)

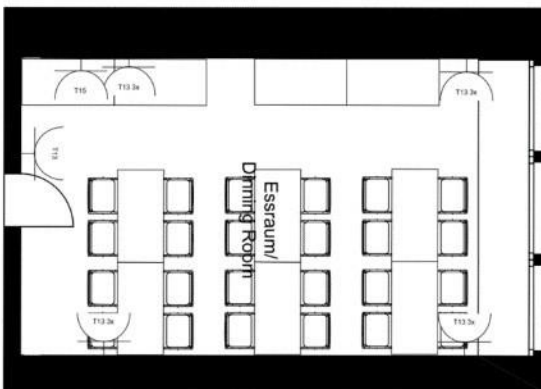
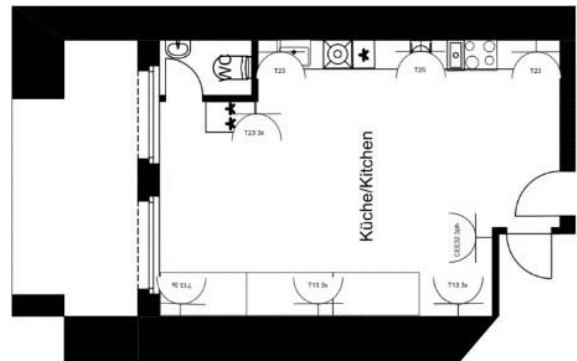
- ✓ Hot plate with 4 cooking rings
- ✓ 1 x electric grill
- ✓ 1 x steamer
- ✓ 1 x dishwasher
- ✓ 1 x large fridge

Power: 1 x 32A CEE (3P)

12 x T13 Swiss Plug

1 x T15 Swiss Plug

Strictly no gas cooking allowed



## Catering room

Is located on the 2nd floor, three floors above the dressing room area.

There is no lift.

Tables and chairs for approx. 24 people.

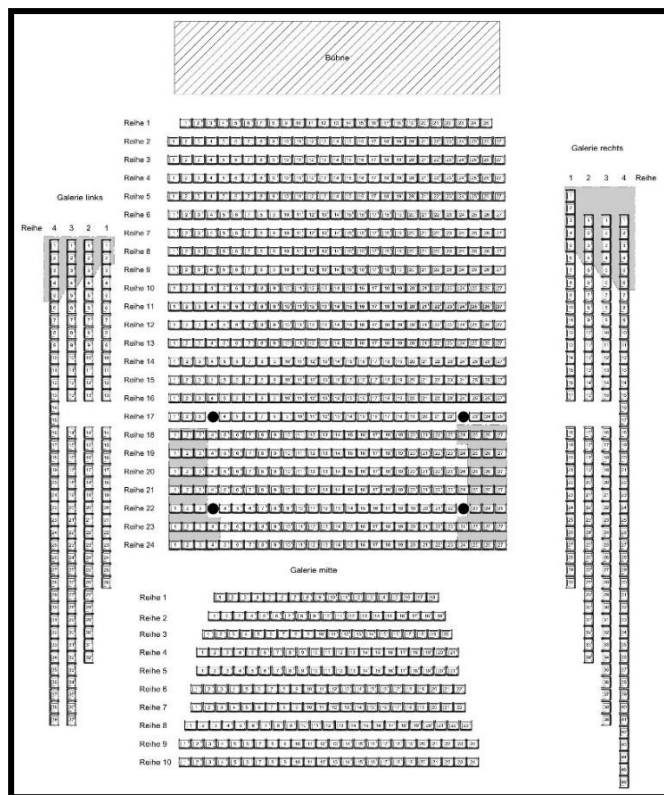
One larger fridge available.

Power: 6 x T13

1 x T15

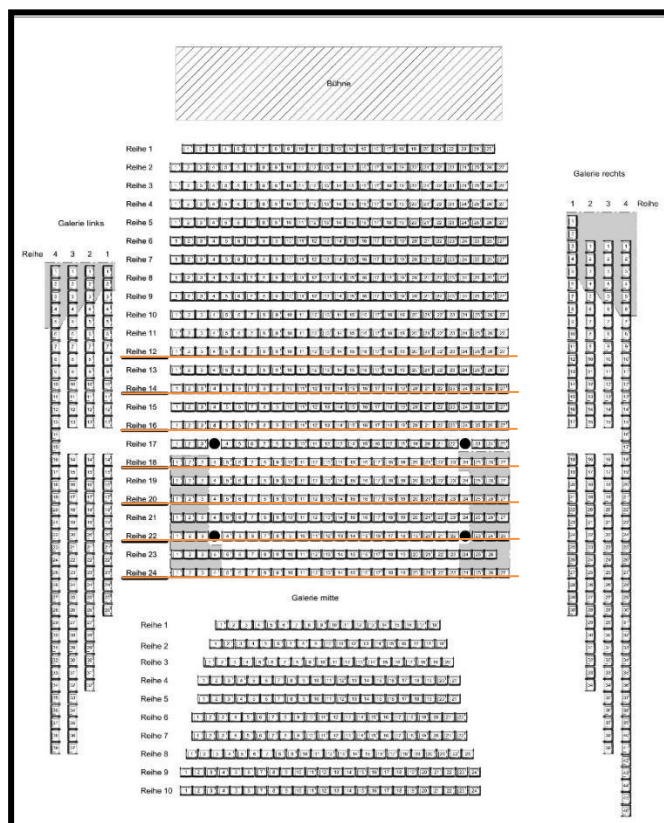


# 16. THEATERSAAL



## Without podestery

- Line-of-sight obstruction
- pillar



## With podestery

- Line-of-sight obstruction
- Pillar
- Podestery



For standing concerts, a wheelchair platform (0.40 m height) can be built - stage left.

# 17. PERSONNEL ALLOCATION

## Ticket control and safety check

Will be organized by the local promoter. We recommend following local partner:

Security & Safety AG

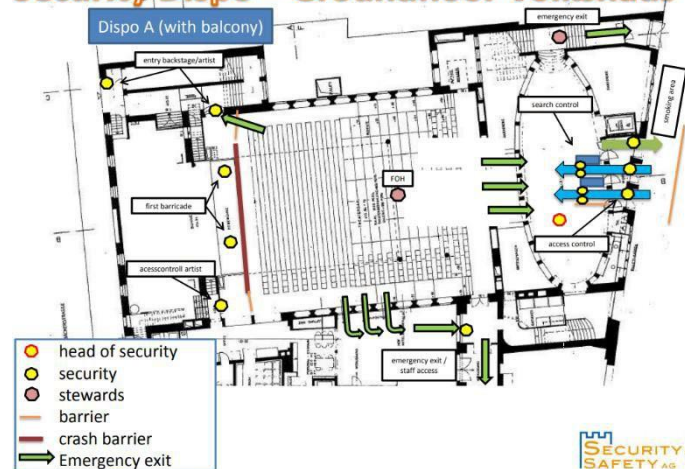
Link: [Security & Safety AG](#)

Email: [info@securityandsafety.ch](mailto:info@securityandsafety.ch)

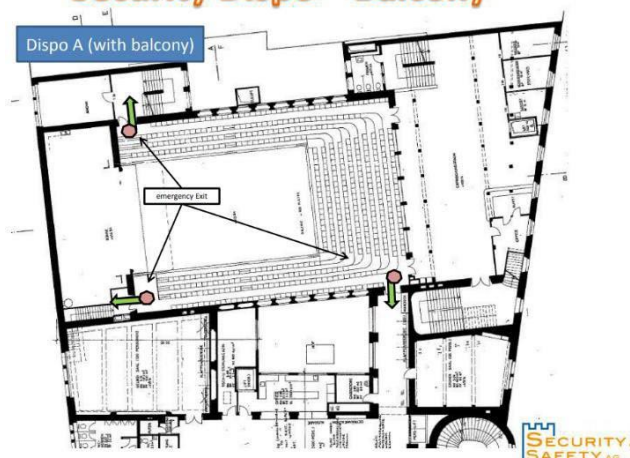
Phone: +41 (0)44 447 20 10

## Recommendation of the venue and the house security

### Security Dispo – Groundfloor Volkshaus



### Security Dispo – Balcony



## Public wardrobe

The public wardrobe will be organized by the venue itself. It is up to the guests to use the public wardrobe. If used, there is a fee to pay in cash.

## Drinks & food

Drinks & food are allowed in the Theatersaal if purchased at the venue, but only PET and reusable cups or bottles. No glass allowed.

## 18. MERCHANDISE

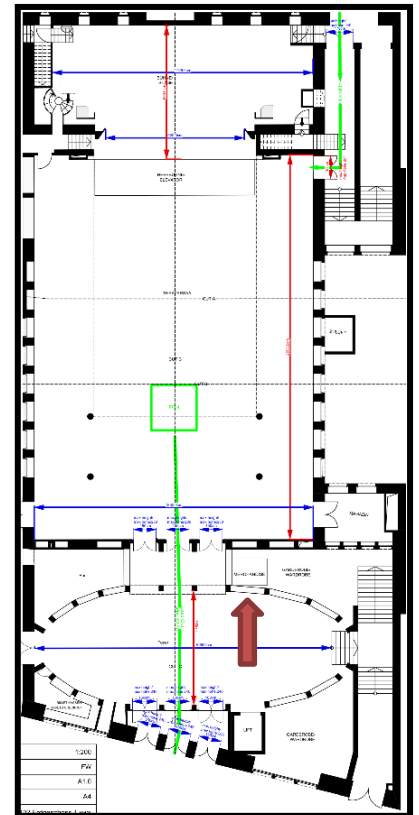
There is an extra fee of CHF 210.- on merchandising which has to be paid in cash at the venue.

Merchandise position is in the foyer (indoor).

That's included: Table, chair, power

### Merchandise import

As Switzerland is outside of the European Union, all merchandise needs to be officially imported and exported. Paperwork may be checked by the authorities on show day. If you need assistance with the import and export please let the local promoter know to connect you with a company that will take care of it.



## 19. DIVERSES/ HOUSE SPECIFICATIONS

Wifi	There is a free login at the venue. You can find the login details in the backstage area.
Crash barriers	Type Stacco, 22 available (with costs)
Police barriers	15 available (for free)
Timetable	Due to the catering situation, we recommend a break of 25-30 minutes between the two show parts.
Gong	The local promoter can activate the gong before the show starts and at the end of the break.
Flyer & poster	It is allowed to hang posters on the pillar and place flyers in the foyer.
Emergency medical service	If needed or requested. Contact: Medicalstaff – Fredi Schenkel fredi.schenkel@medicalstaff.ch phone: +41 (0)79 676 82 77
Terms and	Link: <a href="#">Volkshaus Zürich - AGB's</a>
Pricelist	Link: <a href="#">Volkshaus Zürich - Pricelist</a>



## 20. IMPRESSION

