

VOLKS HAUS

VENUE SPECIFICATIONS THEATERSAAL

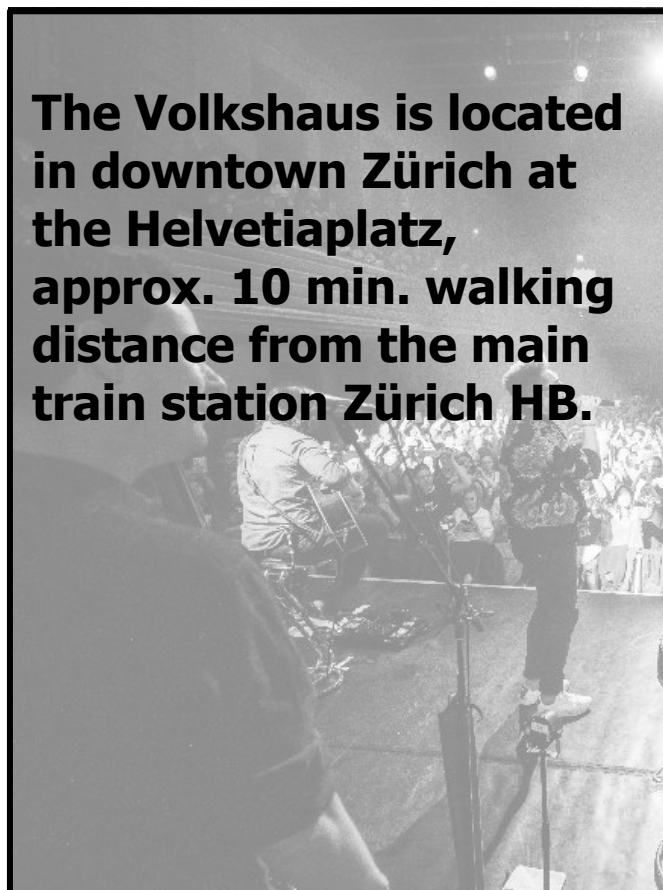


Stauffacherstrasse 60
8004 Zürich

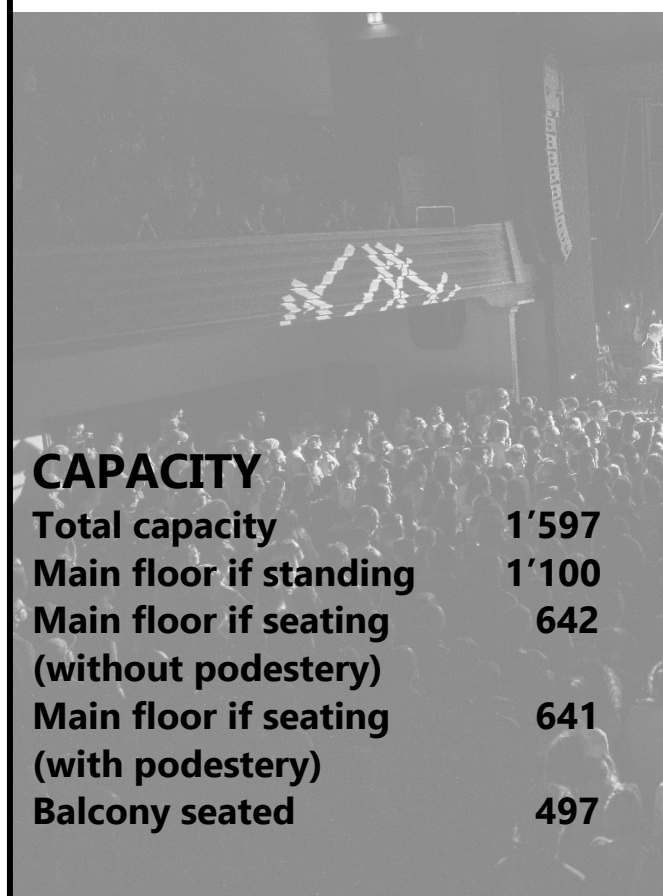
Tel.: +41 44 241 64 04
Mail: info@volkshaus.ch
Web: www.volkshaus.ch

ZÜRICH

The Volkshaus is located in downtown Zürich at the Helvetiaplatz, approx. 10 min. walking distance from the main train station Zürich HB.



© David Hubacher



CAPACITY

Total capacity	1'597
Main floor if standing	1'100
Main floor if seating (without podestery)	642
Main floor if seating (with podestery)	641
Balcony seated	497

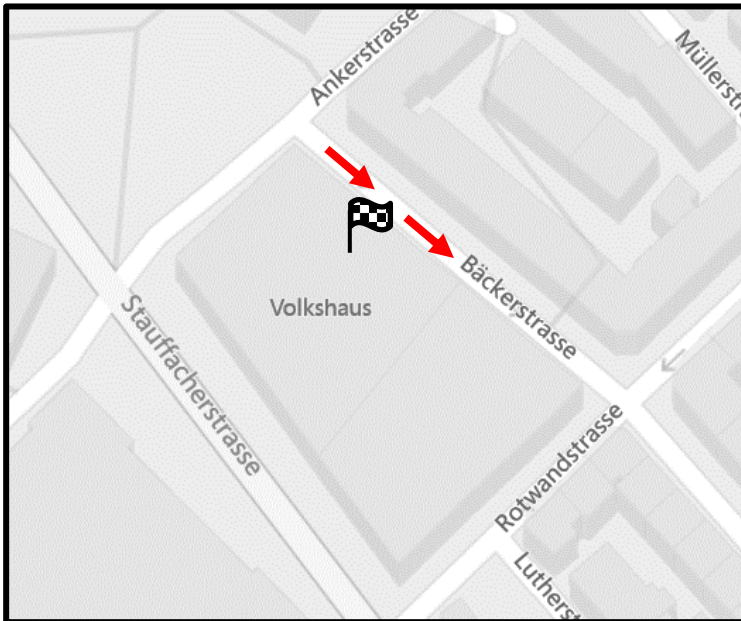


© David Hubacher

Index

1.	How to get to the Venue	3
2.	Parking	4
3.	Load In/ load out	5
4.	Stage.....	6
5.	Power	7
6.	Rigging.....	8
7.	PA specs	9
8.	Audio	10
9.	Microphone	11
10.	Light	12
11.	Video	13
12.	FOH	13
13.	Special effects.....	13
14.	Dressing rooms	14
15.	Catering	15
16.	Theatersaal	16
17.	Personnel allocation	17
18.	Merchandise	18
19.	Diverses/ House specifications.....	18
20.	Impression	19

1. HOW TO GET TO THE VENUE



To get to the backstage entrance and the load-in, use this navi address:

**Bäckerstrasse 57
8004 Zürich
Switzerland**

Link: [Google maps - Bäckerstrasse 57](#)

Please note, the Bäckerstrasse is a one-way street as you see on the map.

Federal decree of Switzerland

Permits for trucks (not busses) are required for the following time:

MON to SAT: 10.00 PM – 05.00 AM

SUN: all day long

The local promoter, not the Volkshaus, will organize a permission for the truck drivers, so please send all details at least two weeks before the show.

Link: [Apply for the permission for the truck driver](#)

2. PARKING

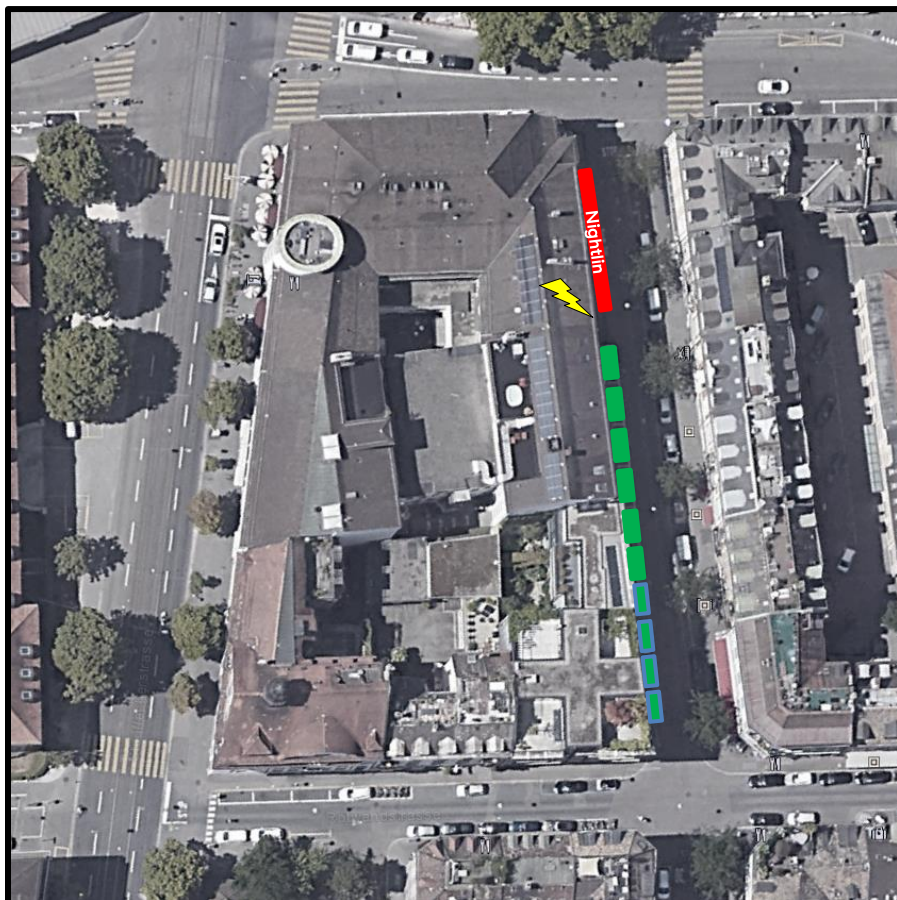
Truck and bus parking:

There is 76 m max. space for all vehicles at the venue. You can find the details on the map.

The local promoter needs to know the exact number of vehicles to apply for the permit.

Please note that productions with more vehicles have to park some of the vehicles offside (not at the venue).

- Nightliner, Trailer (20m)
Truck parking & Load-In
- Nightliner power: 2 x 32 A CEE
1 x 16 A CEE
- Parking for Truck, Vans or Cars
(in total 36m)
- Parking (20m)



IMPORTANT

Due to neighbour complaints, the venue has issued a strict rule that all nightliners **MUST** be parked at the far end of the parking zone, with the rear as close to the corner of Ankerstrasse/Bäckerstrasse as possible.

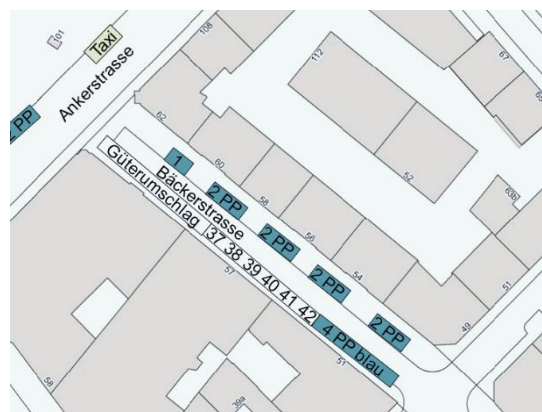
Thank you very much for your cooperation!

The parking area must be applied at the police station at least 2 weeks before the show.

This must be organized by the local promoter.

If there is a problem with the blocked parking zone at the time the nightliner arrives, please call the police directly.

Contact: Police station Zürich
Phone +41 (0)44 411 60 40
stp-kreischef-4@zuerich.ch



3. LOAD IN/ LOAD OUT

Load in

At Bäckerstrasse 57, 8004 Zürich (backstage entrance)

- 8 m flat push to stage without stairs then hydraulic lift at the front of the stage

Door details:

width 1.40 m, height 2.08 m

Lift details:

width 10.60 m, depth 2.40 m, (max. 5'000 kg)

- One truck at the same time

Load out

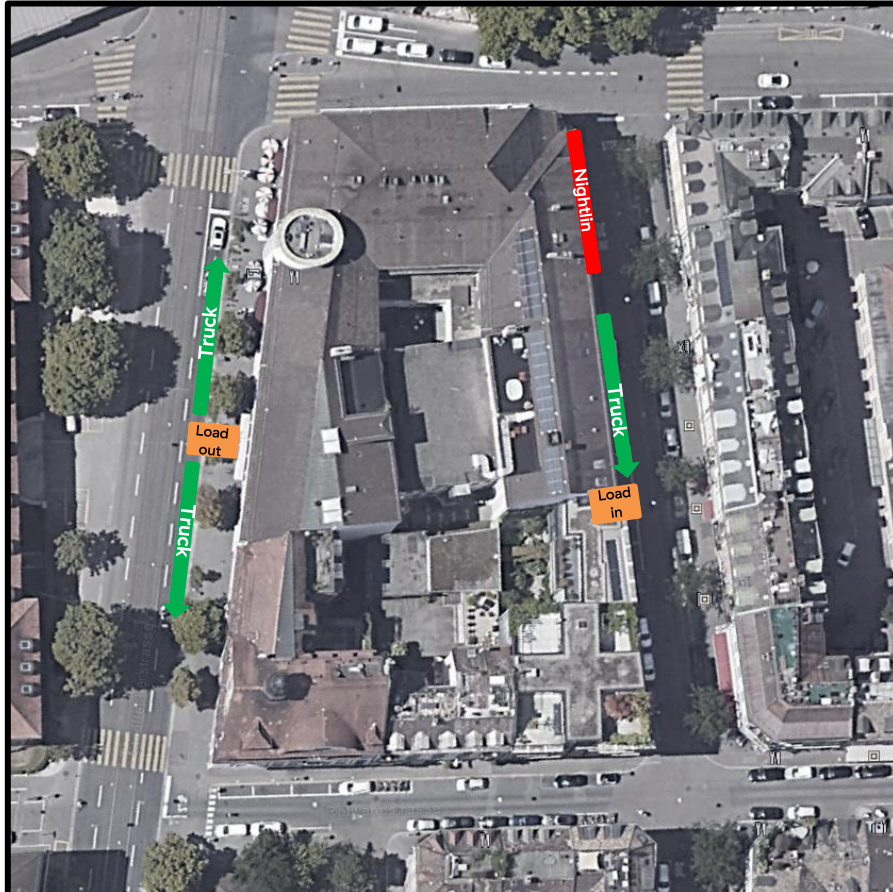
After 10.00 PM at Stauffacherstrasse (main entrance)

- 30 m straight push without stairs, using the hydraulic lift in front of the stage

Door details:

width 1.48 m, height 2.59 m

- Two trucks at the same time, parking back to back on the street
- Load out dock is built by the venue



4. STAGE

STAGING SYSTEM

Fix stage

Width	9,20 m in proscenium 16,00 m behind proscenium
Depth	8,90 m without fore stage section
Height	1,15 m
Clearance	5,25 m at proscenium 9,00 m behind proscenium

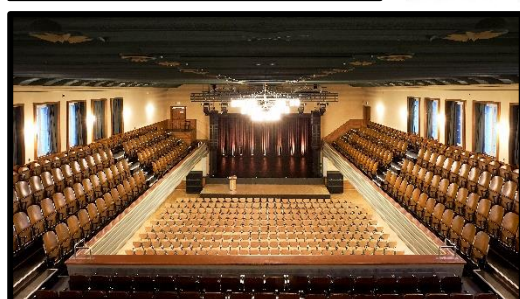
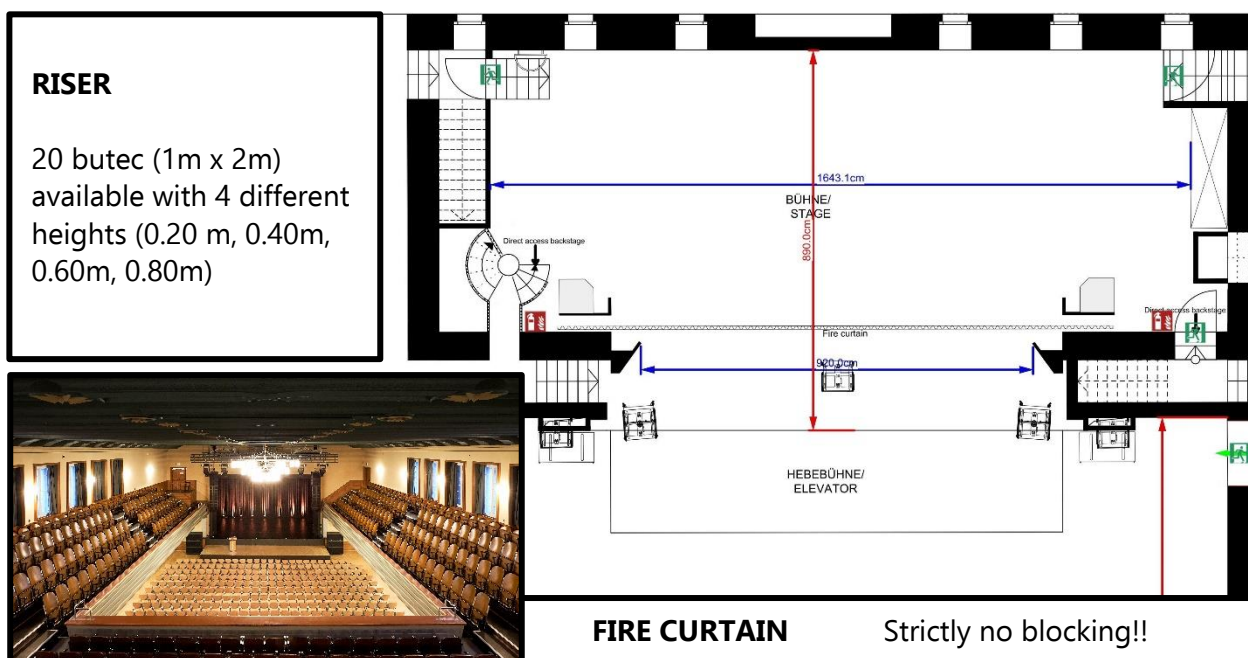
FORESTAGE

Width	10,60 m
Depth	2,40 m
Height	0,00 – 1,15 m (flexible)

HYDRAULIC ELEVATOR

can be placed on 3 (three) levels:
- stage
- ground floor
- backstage level

Maximum load 5'000 kg



STORAGE

All backline cases can be stored under the stage. Use the elevator to bring the cases down on -2nd floor.
Door details: width 2.20m and height 1.98 m

5. POWER

General power information

All power is 220 / 380 V / 50 Hz
The power supplies all downstage right

Lighting power

Main fuse

3 x 250 A CEE (3P) maximum

Lighting power split and connections

2 x 125 A CEE (3P)
2 x 63 A CEE (3P)
1 x 32 A CEE (3P)
3 x 16 A CEE (3P)
1 x 250 A CEE (3P) Powerlock tails / lugs
Lighting power location all downstage right

Sound power

Main fuse

3 x 75 A CEE (3P) maximum

Sound power split and connections

1 x 63 A CEE (3P)
2 x 32 A CEE (3P)
1 x 16 A CEE (3P)



Nightliner power

2 x 32 A CEE
1 x 16 A CEE

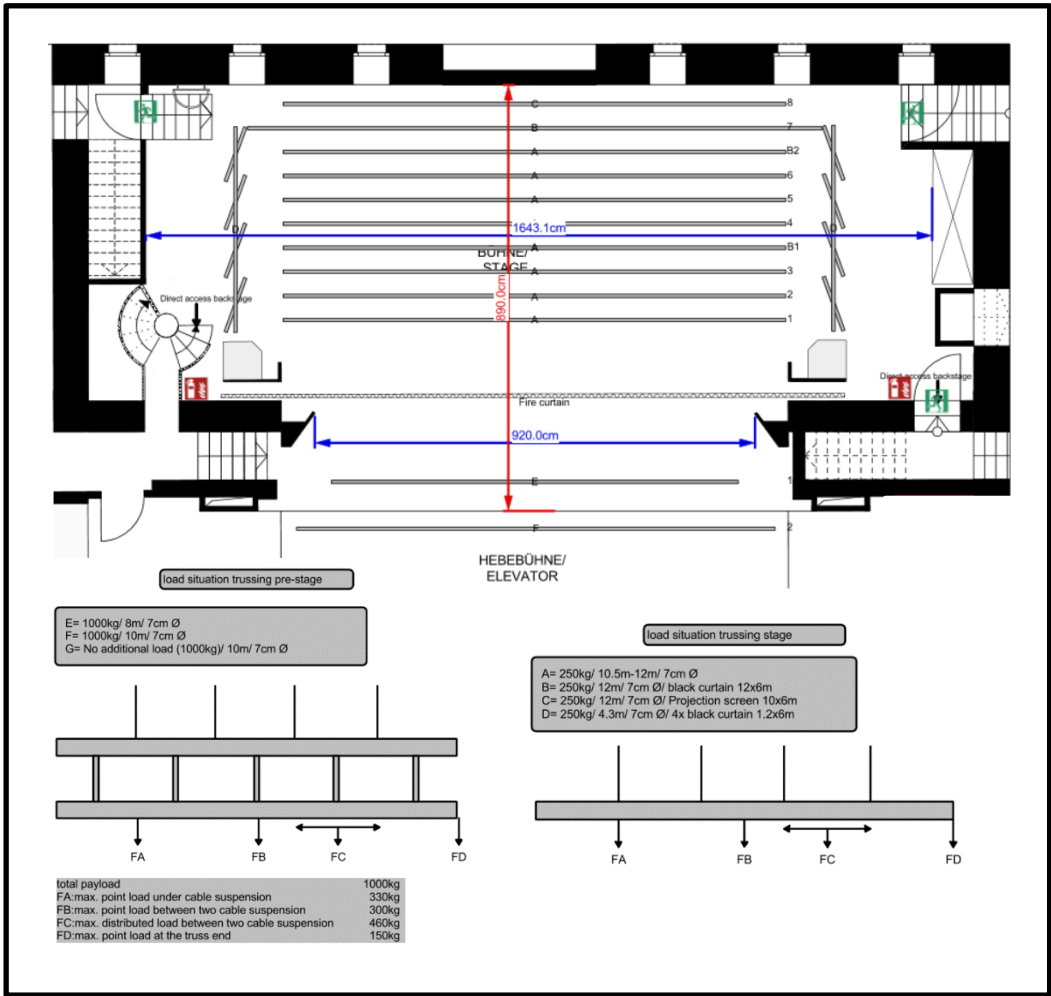
6. RIGGING

Clearance 5.25 m at proscenium
9.00 m behind proscenium

Stage section:
3 x metal T-beams 500 kg per bar with motor
Distances from backwall: 1.85 m / 3.15 m / 4.65 m

7 x theatre style bars 250 kg per bar
Ø 70 mm, adapter available Ø 50 mm

Downstage:
4 bars, max 1'000 kg per bar
Ø 70 mm, adapter available Ø 50 mm



7. PA SPECS

It is recommended to use the house PA.
If not using the house PA, it must be removed, which costs extra.



Main PA	18	L-Acoustics Kara 2-Way Modular WST
	4	L-Acoustics SB18 High Power Compact Subwoofer
Subs	6	L-Acoustics SB28 High Power Subwoofer
Center fill	2	L-Acoustics Arcs Wide WST Linesource
Under balcony	4	L-Acoustics Arcs Wide WST Linesource
Amping	1	All speakers driven with LA8
Matrix	1	L-Acoustics LA P1 Measurement Platform
Connectors	3	Stage left: XLR Analog: left, right, sub
	2	Stage left: XLR AES/EBU: left, right, sub

8. AUDIO

F.O.H. / Desk

- 1 Console Midas Pro 2
- 1 Midas Stagebox DI251 inkl. Sub Muco
Digital: 48 In / 16 Out
Analog: 40 In / 8 Out
- 1 Fan Out, 40/16 Neutrik
- 2 12 Channel Sub Muco Independent
- 2 12 Channell Sub Muco with Stage-
box DI251

Intercom

- 1 ASL Masterstation
- 6 6x ASL PS19A beltpack
- 6 6x ASL Headset

Monitoring

- Wedges 10 PL-AUDIO M15 CX
Monitorbox 900-1200 W

- Drumfills 2 EV ELX 118 P
- 2 EV ELX 115 P

Multicore-System

Audio Hybrid Multicore 60m

- 2 Audio convertCON XLR
- 2 Cat5 etherCON
- 1 Netz T13 (Shuko)

Akustikanalyzer

- 1 NTI Audio XL 2 M2211

IMPORTANT

No Soundcheck before 5:00 PM.

Federal decree of Switzerland

Sound level limitations:

Events with a sound level between 93 and 96 decibels must be reported to the authorities.

Events with a sound level between 96 and 100 decibels must be reported to the authorities AND recorded/documentated.

Link for further information: [Schall- und Laserverordnung](#)



9. MICROPHONE

Microphones

7	Shure SM 58
2	Shure Beta 58A
5	Sennheiser 935
8	Shure SM 57
2	Shure Beta 57A
1	Shure Beta 52A
1	Shure Beta 91
2	AKG D112
4	Sennheiser E904
1	Sennheiser E906
3	Sennheiser Black Fire
3	AKG C5600 Condenser
3	AKG C3000 Condenser
4	AT 5100AE Condenser
2	AKG SE300b Condenser
1	EV RE20
4	Sennheiser MD441-4
1	AT 8471
2	Audix clip-on for wind instruments
1	Shure SM86

Mic Stands

7	K&M stand small
14	K&M stand big

D.I.

8	Clark DN100 Aktive D.I.
7	BSS D.I. Box AR-133

Wireless

9	Sennheiser EW 500 G4
9	Sennheiser SKM 300 G4 Handheld e935
9	Sennheiser SK 300 G4 Bodypack
9	Sennheiser HSP 4 Headset

Backline

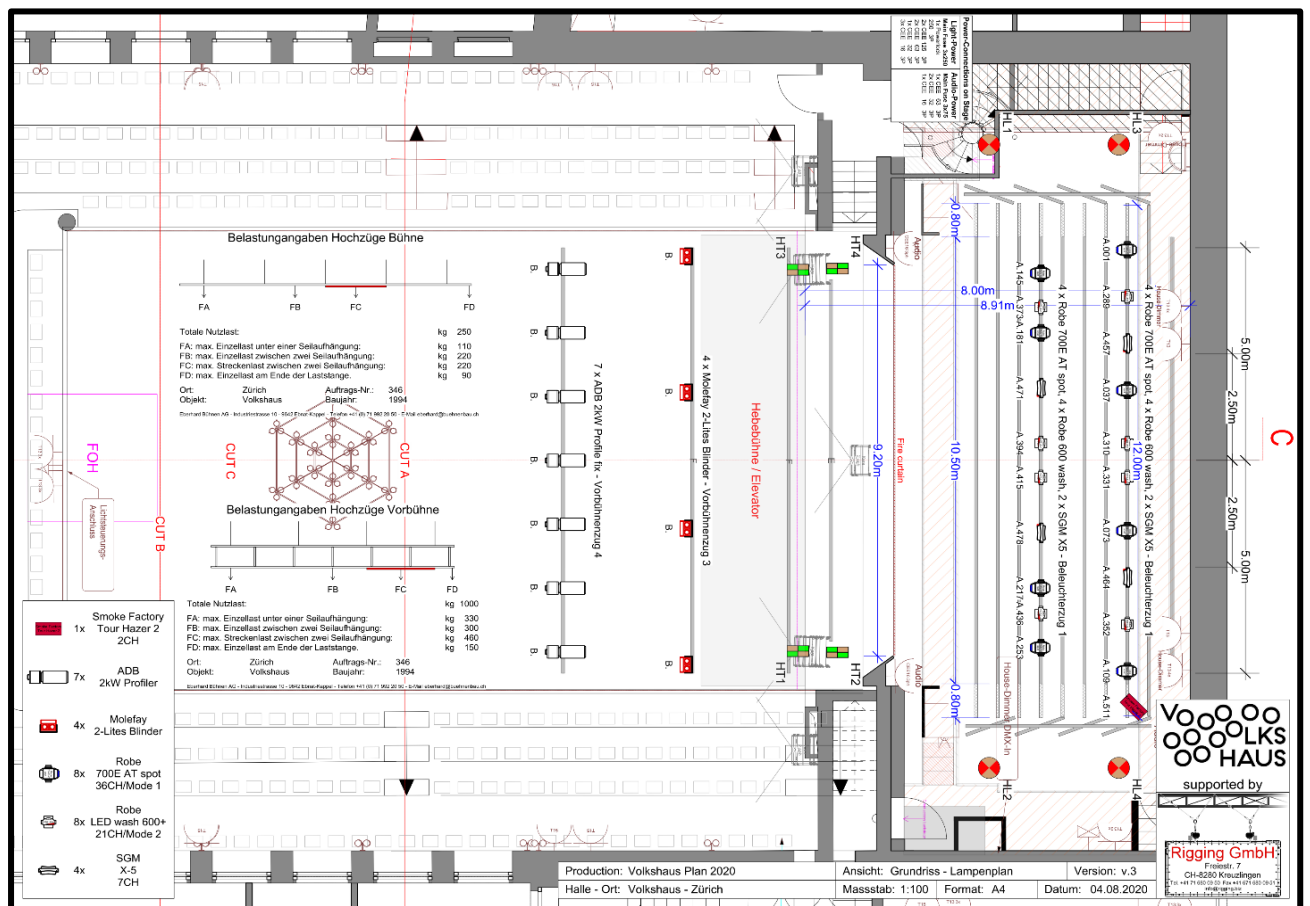
Grand Piano Steinway D Can be tuned by the house with additional costs

10. LIGHT

VOLKS HAUS

Lighting desk	1	Avolites Titan Quartz
	1	Avolites Titan Mobile Wing
Front lighting		
fixed installation	7	ADB 2kW Profiler
flexible lighting	8	Robe ColorSpot 700E AT
	12	Robe LEDWash 600+
	4	SGM X-5 LED Strobe
	16	LED Par 64 RGBW
	10	ADB 1KW Profiler
	4	ADB 2KW Fresnel
	4	ADB 2KW PC
	10	ADB 1KW Fresnel
	10	ADB 1KW PC
	4	8 ACL Par64
	6	Par 64 Six-Bar
	4	Par Audience Blinder 2er
	8	Par 64 Floor
Dimmer Rack	1	ADB 120 x 2,5 KW

Follow Spot	2	Clay Paky Shadow HMI 1200 (Position is in the balcony)
Smoke Machine	2	Smoke Factory Tour Hazer II
Wind-Up Stativ	8	Manfrotto



11. VIDEO

Projector	1	Panasonic PT-MZ770EJ LCD LED / Laser 8000 ANSI Resolution: 1920 x 1200 Pixels
Screens	1	Stumpfl 6,50 m x 3,50 m
	1	Roll-up screen 8,00 m x 6,00 m (fixed installation)
Accessory	1	HDMI 2.0 Active Optical Cable 50m

12. FOH

Standard FOH position	Production sensitive, but normally just in front of balcony overhang on the main floor
Cable run	Approx. 70 m cable from stage, along the balcony down to the FOH on the main floor
FOH size	Production sensitive but normally around 3m x 3m
Do seats get lost	Yes, the number of lost seats depend on the FOH size

13. SPECIAL EFFECTS

Pyro effects Must be approved by the local fire police.
Please send all documents necessary including operator licenses to the promoter at least 21 days before the show.

Contact: Crazy flash GmbH
Erich Frey
Baldeggstrasse 20
CH - 6280 Hochdorf

Email: info@crazyflash.ch
Phone: +41 41 455 40 00

Laser effects Mandatory to notify.

Federal decree of Switzerland

As of December 1, 2020, the federally recognized certificate of expertise or the federally recognized certificate of expertise is mandatory for laser shows.

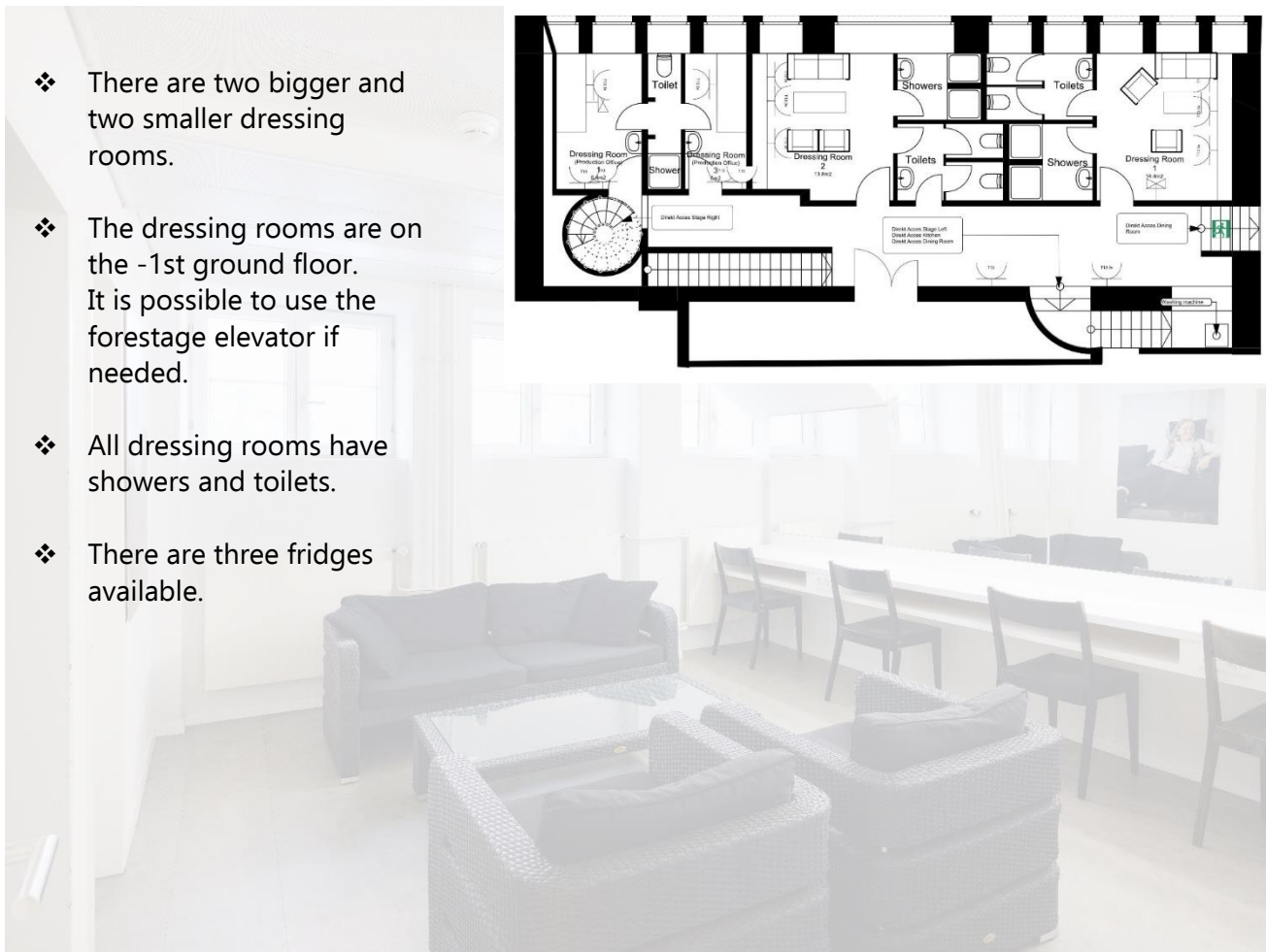
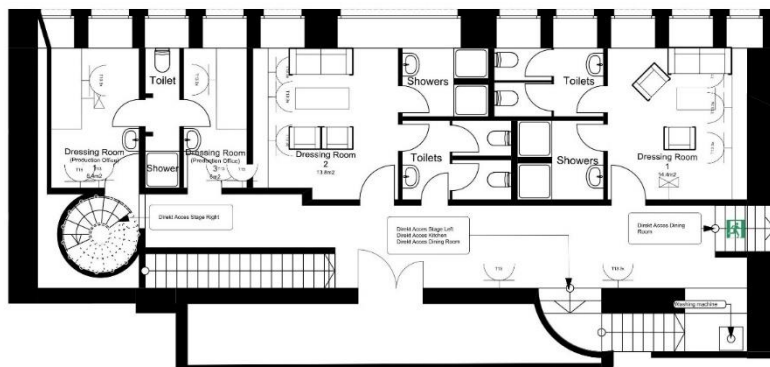
The V-NISSG (Ordinance to the Federal Law on Protection against Hazards due to Non-Ionizing Radiation and Sound) replaces the SLV (Sound and Laser Ordinance) and came into force on June 1, 2019.

The new ordinance provides for a nationwide qualification and certification of specialists who install, commission and operate laser equipment of classes 1M, 2M, 3R, 3B or 4.

Link: [Lasershows](#)

14. DRESSING ROOMS

- ❖ There are two bigger and two smaller dressing rooms.
- ❖ The dressing rooms are on the -1st ground floor. It is possible to use the forestage elevator if needed.
- ❖ All dressing rooms have showers and toilets.
- ❖ There are three fridges available.

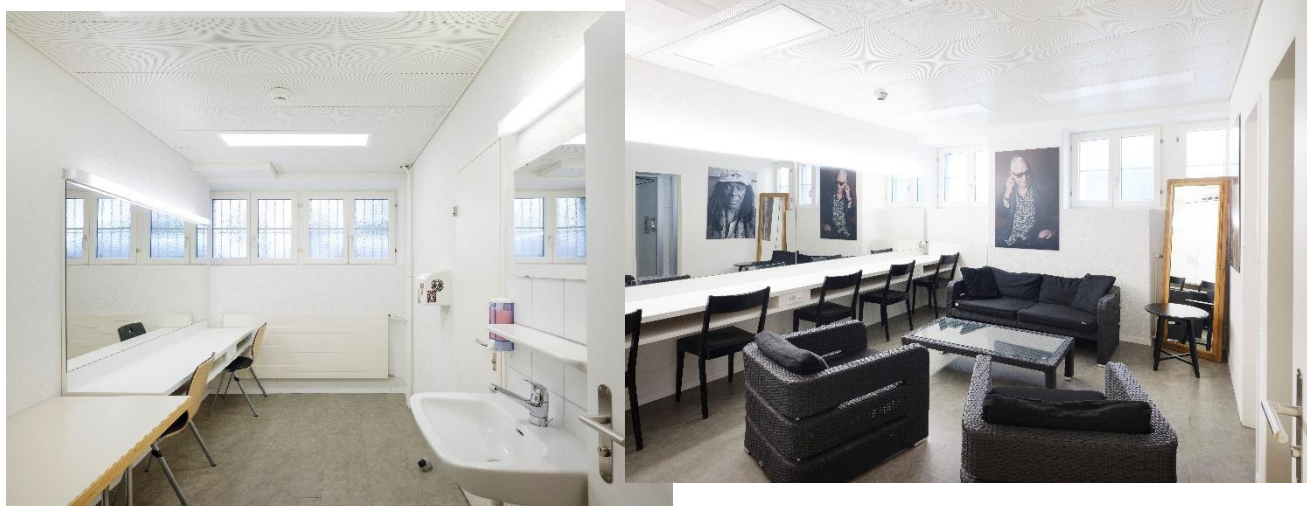


Washing machine and dryer

Can be used for free on the -2nd ground floor.

Iron and ironing board

Available at the venue



15. CATERING

Local Catering

Restaurant Volkshaus

Information Bankett, Events und Konzerte

Phone : +41 (0)44 245 85 58

Email : anlass@restaurantvolkshaus.ch

Link : [Restaurant Volkshaus](#)

Kitchen for tour catering

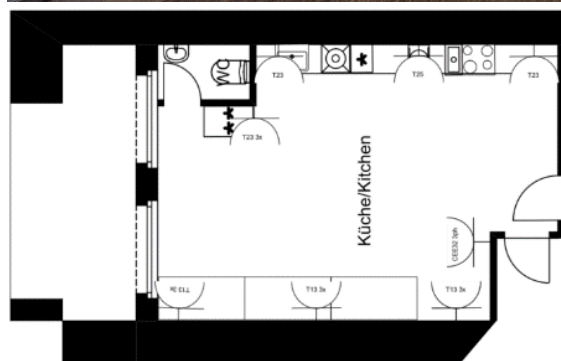
Is located on the 1st floor. Two floors above the dressing room area.

Rental costs CHF 250.- (all included)

- ✓ Hot plate with 4 cooking rings
- ✓ 1 x electric grill
- ✓ 1 x steamer
- ✓ 1 x dishwasher
- ✓ 1 x large fridge

Power: 1 x 32A CEE (3P)
12 x T13 Swiss Plug
1 x T15 Swiss Plug

Strictly no gas cooking allowed



Catering room

Is located on the 2nd floor, three floors above the dressing room area.

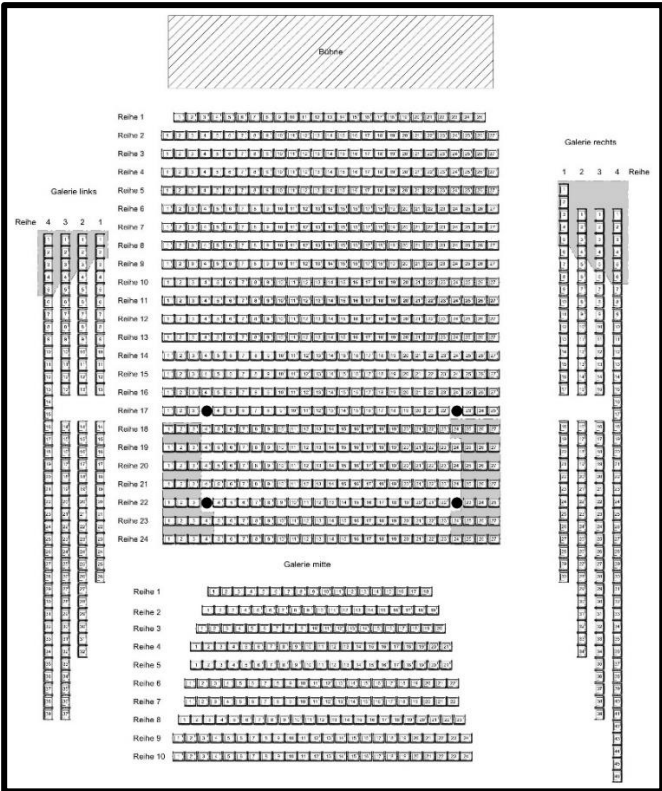
There is no lift.

Tables and chairs for approx. 24 people.

One larger fridge available.

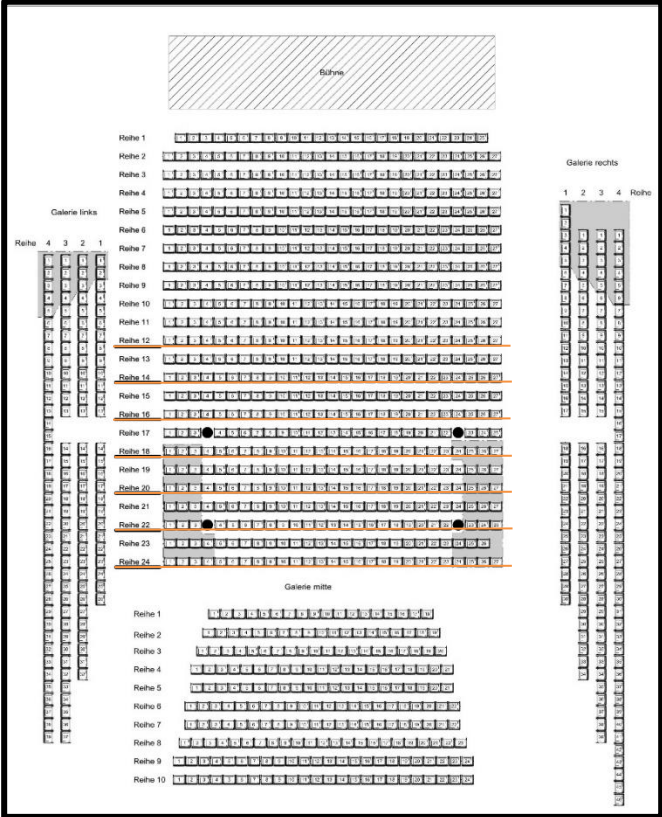
Power: 6 x T13
1 x T15

16. THEATERSAAL



Without podium

- Line-of-sight obstruction
- pillar



With podium

- Line-of-sight obstruction
- Pillar
- Podestery



For standing concerts, a wheelchair platform (0.40 m height) can be built - stage left.

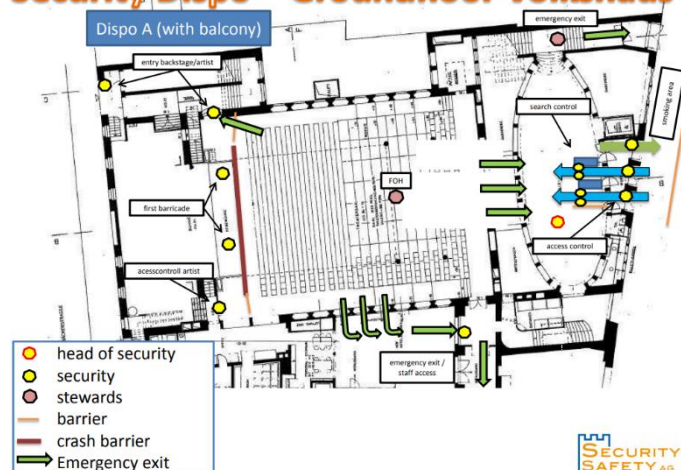
17. PERSONNEL ALLOCATION

Ticket control and safety check Will be organized by the local promoter. We recommend following local partner:

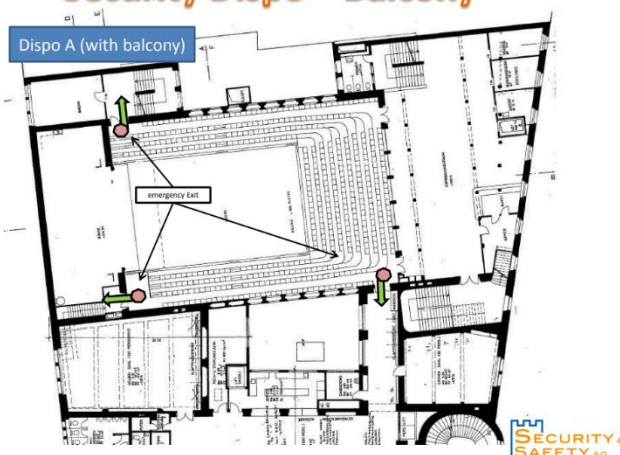
Security & Safety AG
 Link: [Security & Safety AG](#)
 Email: info@securityandsafety.ch
 Phone: +41 (0)44 447 20 10

Recommendation of the venue and the house security

Security Dispo – Groundfloor Volkshaus



Security Dispo – Balcony



Public wardrobe

The public wardrobe will be organized by the venue itself. It is up to the guests to use the public wardrobe. If used, there is a fee to pay in cash.

Drinks & food

Drinks & food are allowed in the Theatersaal if purchased at the venue, but only PET and reusable cups or bottles. No glass allowed.

18. MERCHANDISE

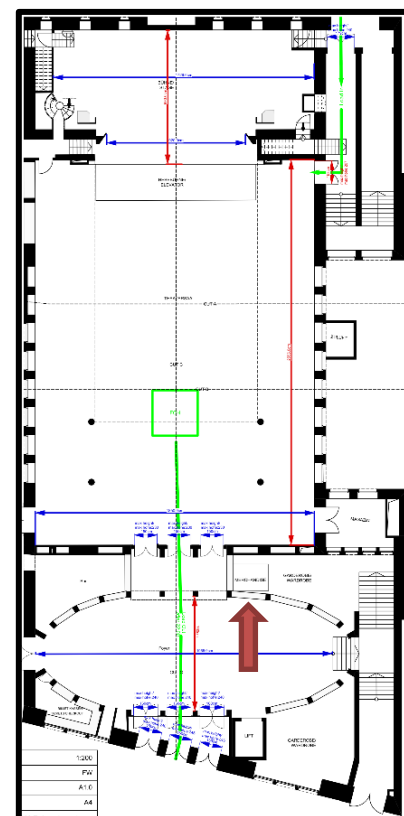
There is an extra fee of CHF 200.- on merchandising which has to be paid in cash at the venue.

Merchandise position is in the foyer (indoor).

That's included: Table, chair, power

Merchandise import

As Switzerland is outside of the European Union, all merchandise needs to be officially imported and exported. Paperwork may be checked by the authorities on show day. If you need assistance with the import and export please let the local promoter know to connect you with a company that will take care of it.



19. DIVERSES/ HOUSE SPECIFICATIONS

Wifi	There is a free login at the venue. You can find the login details in the backstage area.
Crash barriers	Type Stacco, 22 available (with costs)
Police barriers	15 available (for free)
Timetable	Due to the catering situation, we recommend a break of 25-30 minutes between the two show parts.
Gong	The local promoter can activate the gong before the show starts and at the end of the break.
Flyer & poster	It is allowed to hang posters on the pillar and place flyers in the foyer.
Emergency medical service	If needed or requested. Contact: Medicalstaff – Fredi Schenkel fredi.schenkel@medicalstaff.ch phone: +41 (0)79 676 82 77
Terms and conditions	Link: Volkshaus Zürich - AGB's
Pricelist	Link: Volkshaus Zürich - Pricelist

20. IMPRESSION

