

VOLKSHAUS ZÜRICH  
Stauffacherstrasse 60  
CH-8004 Zürich

T +41 44 241 64 04  
info@volkshaus.ch  
www.volkshaus.ch

# VOLKS HAUS

## VENUE SPECIFICATIONS WEISSER SAAL

Version 21.04.26

1  
22



# ZÜRICH

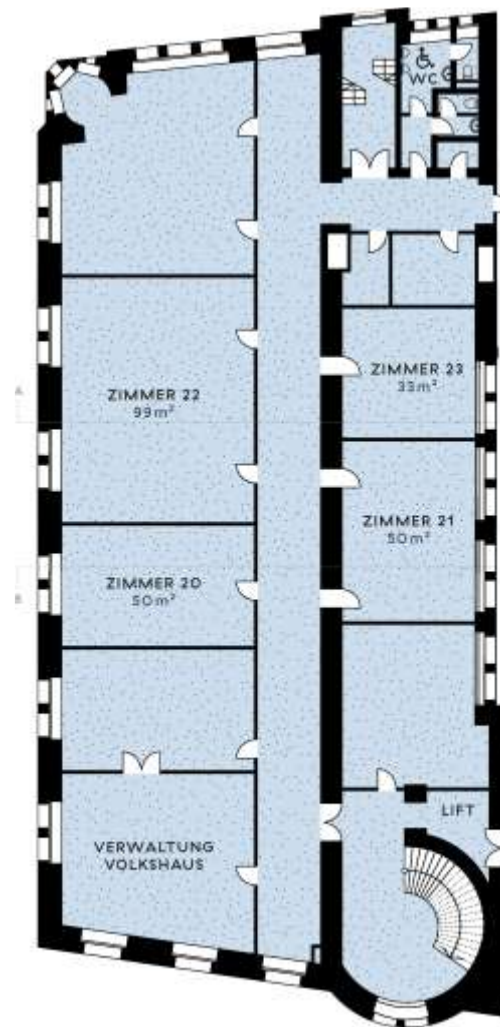


# OVERVIEW HOUSE

First floor



Second floor



# CATERING

For standing lunches, aperitifs, banquets and kiosks during breaks, please contact the Banquet Office.

Restaurant Volkshaus

 +41 44 245 85 58

 [anlass@restaurantvolkshaus.ch](mailto:anlass@restaurantvolkshaus.ch)

 [www.restaurantvolkshaus.ch](http://www.restaurantvolkshaus.ch)

Our in-house restaurant holds exclusive catering rights; outside food and beverages are not permitted without prior approval.

# ORGANISATION

## IN GENERAL

Events are also taking place in the other halls. Please be considerate, keep noise levels to a reasonable level, and do not spread out excessively in the foyer.

## ADMISSION & SECURITY

Admission control and any security personnel must be organized by the event organizer ([see page 6](#)). Usher staff can be provided by Volkshaus upon request.

## PARKING

The Volkshaus does not provide parking spaces for the *Weisse Saal*.

Information about parking and the surrounding area can be found on page 19.

## MERCHANDISE IMPORT

As Switzerland is outside of the European Union, all merchandise needs to be officially imported and exported. There is no extra fee on merchandising which must be paid at the *Weisse Saal*.

## PROMOTION

Promoting the event is the organizer's responsibility. We can list the event on our website's event calendar if the production company provides a ticketing link.

## COATRACKS

The hall offers retractable coat hooks for approximately 120 guests. If required, additional mobile coat racks are available. These can be placed in the *Weisse Saal* or in a separate hall, ideally the *Grüne Saal* (additional room rental applies). Cloakroom staff can also be provided on request.

Coatracks cannot be placed in the foyer, and no liability can be accepted for items left in the foyer.

## WHEELCHAIRS

The outermost seats in each row on the entrance-door side are suitable for wheelchair users. The organizer may choose in which rows the wheelchair-accessible seats are located. A wheelchair ramp providing access to the stage is also available.

## DRESSING ROOM

The *Weisse Saal* does not have a dedicated backstage dressing room for artists and crew. *Room 23*, a meeting room located on the 2nd floor, can be requested free of charge as an alternative. The room can be equipped with mirrors, coat racks, tables, chairs, and armchairs. While the room does not have private restroom facilities, it is separated from the public area.

For an example of a dressing room, see page 21.

Hangers and towels must be provided by the organizer.

## CLEANING

Please ensure that all flyers and posters are removed after the event. Any items left behind will result in an additional cleaning fee.

## ESCAPE ROUTES

Escape routes in general, and in the foyer in particular, must not be blocked.

For the escape route map, see page 7.

## GRAND PIANO

There is also a grand piano (Steingraeber & Söhne B-192 grand piano, 2021, polished ebony, equipped with Mozartzug action) in the *Weisse Saal*, which can be used on request. An external piano tuner can be booked through us.

## TABLES

The standard tables we provide are 0.72m high, 1.8m long and 0.75m wide.

## WI-FI

There is a free login at the venue. The access data is located in the *Weisse Saal*.

## PRICELIST & TERMS

 [Preisliste & AGBs](#)

## PARTNERS

### SIMULTANEOUS TRANSLATIONS

AVIVOX GmbH  
Industriestrasse 17  
8910 Affoltern am Albis

 [avivox.ch](http://avivox.ch)

 [info@avivox.ch](mailto:info@avivox.ch)

### STREAMING


Stagelight AG  
Walke 43  
9100 Herisau

 [stagelight.ch](http://stagelight.ch)

 [info@stagelight.ch](mailto:info@stagelight.ch)

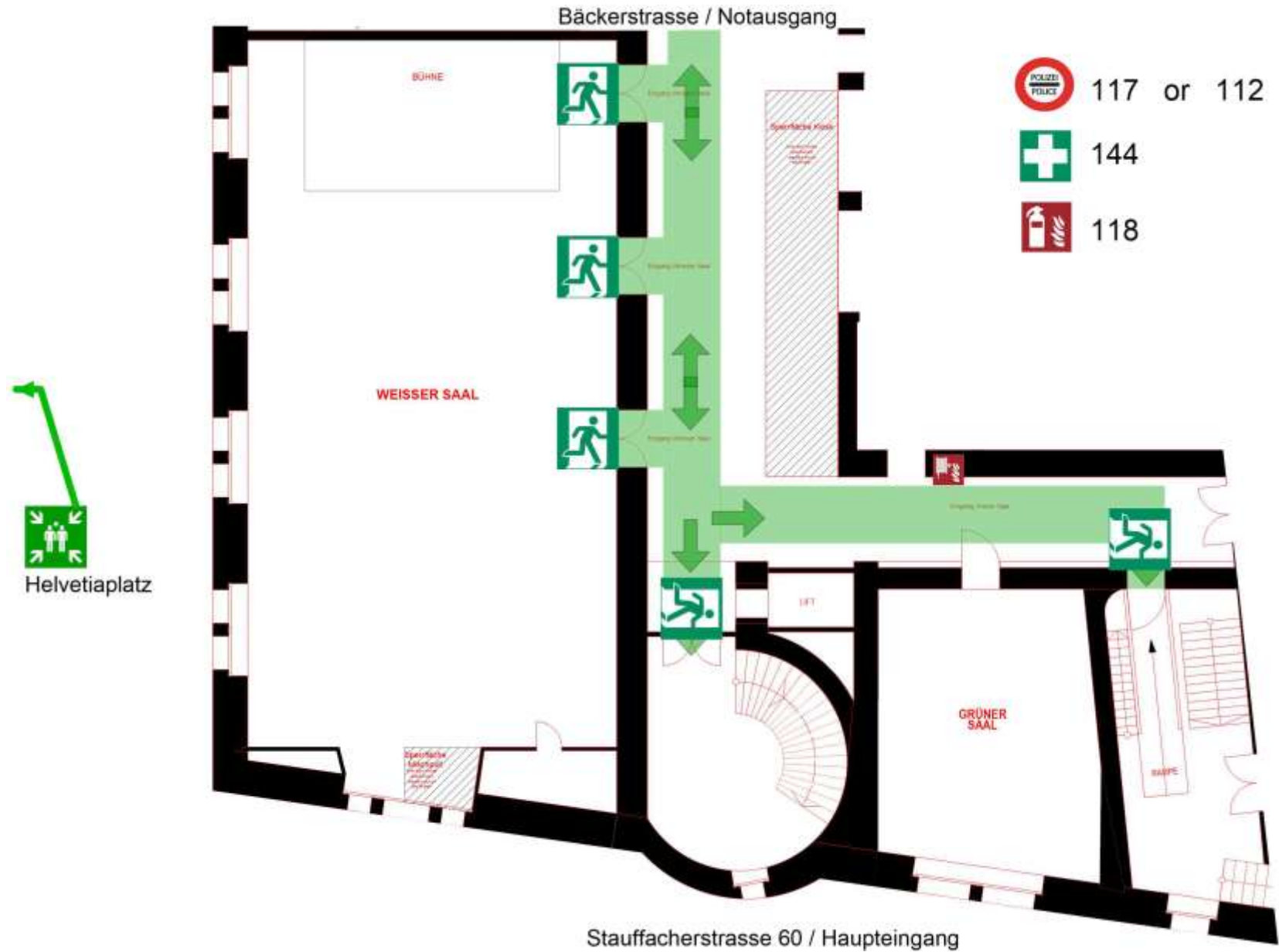
### SECURITY

Security & Safety AG  
Haldenstrasse 23  
CH-8306 Brüttisellen

 [securityandsafety.ch](http://securityandsafety.ch)

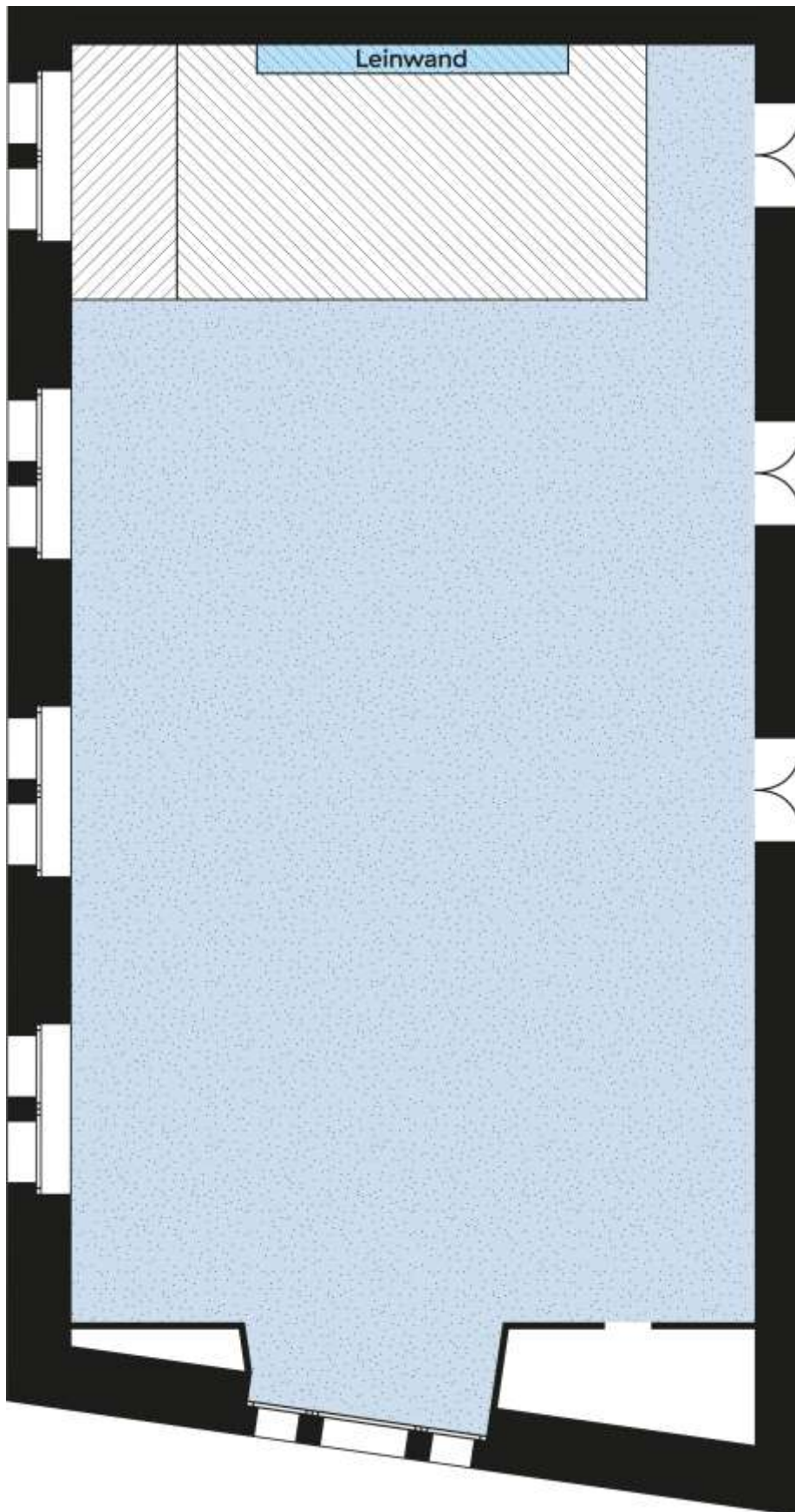
 [info@securityandsafety.ch](mailto:info@securityandsafety.ch)

# ESCAPE ROUTES



# LAYOUT EMPTY

up to 360 people

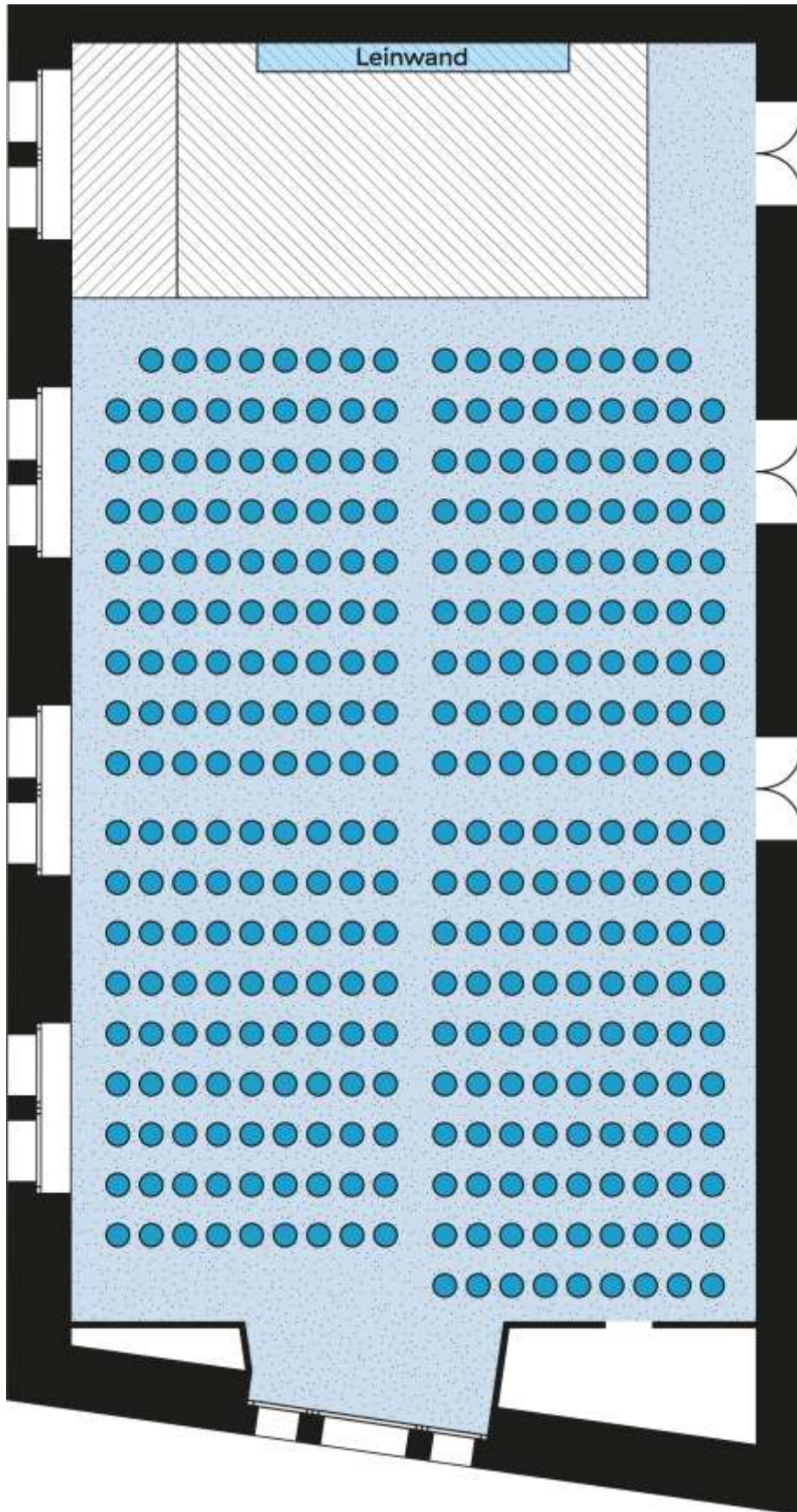


8  
|  
22



# LAYOUT THEATER SEATING

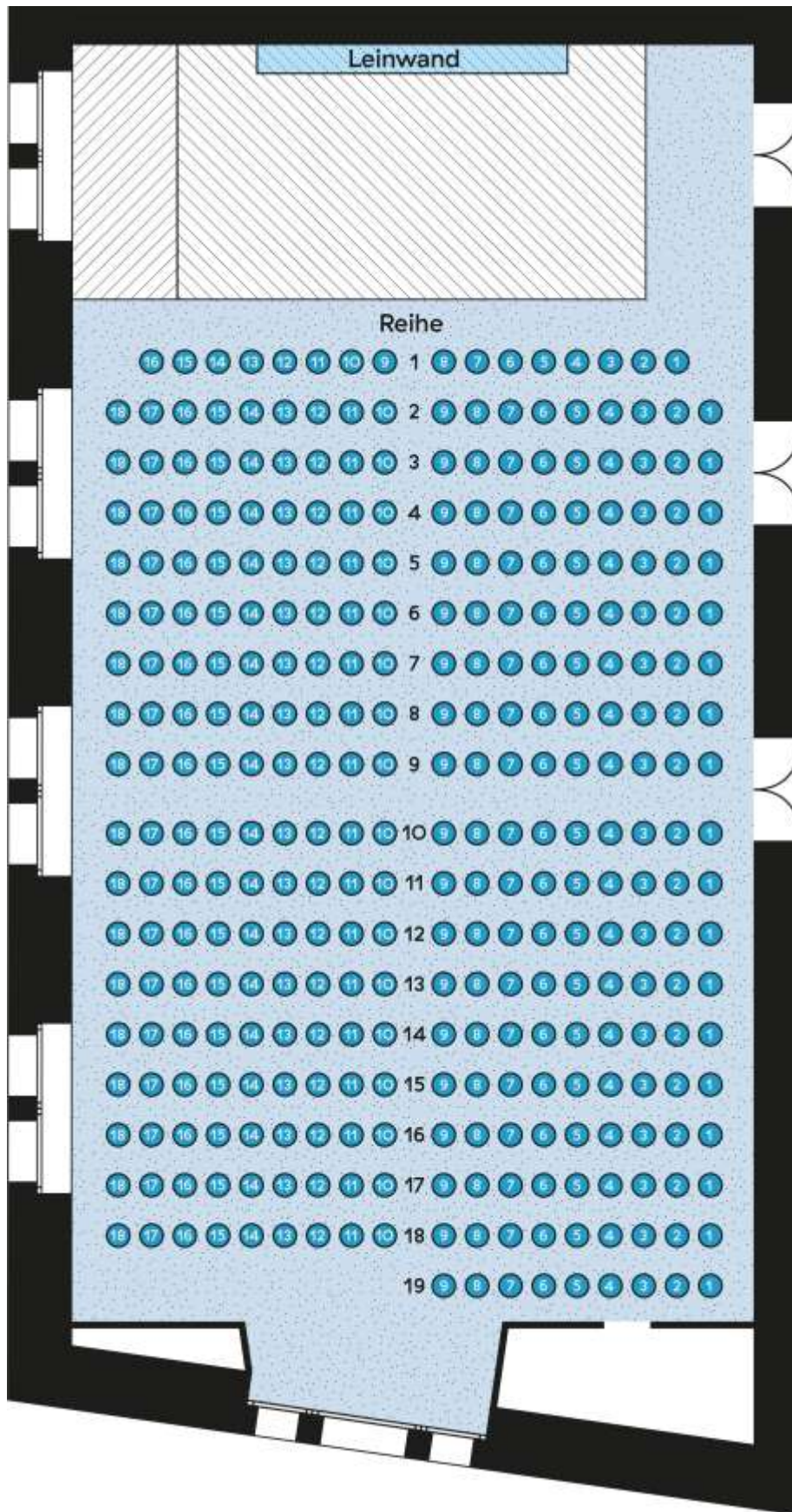
up to 331 people



9  
|  
22

# LAYOUT NUMBERED THEATER SEATING

up to 331 people



10  
—  
22

# STAGE MAP



# VIDEO SPECIFICATIONS

## PROJECTION SCREEN

Width 5m, height 3.5m, motorized / upstage center

## PROJECTOR

Panasonic PT-MZ770. 8000 ANSI Lumen, LCD, Resolution WUXGA 1920 x 1200 (16:10)

## VIDEO ADDITIONALS

HDMI Cables

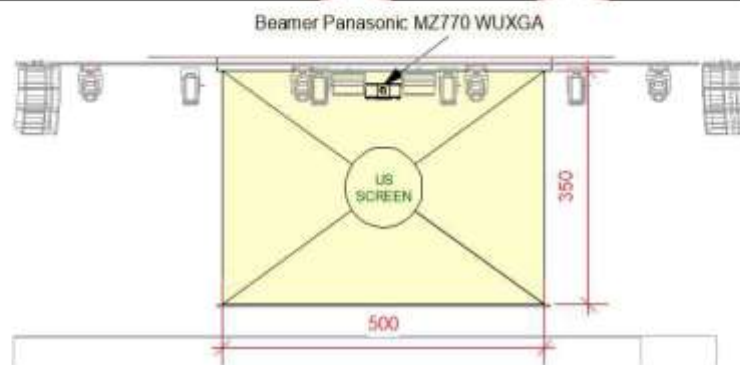
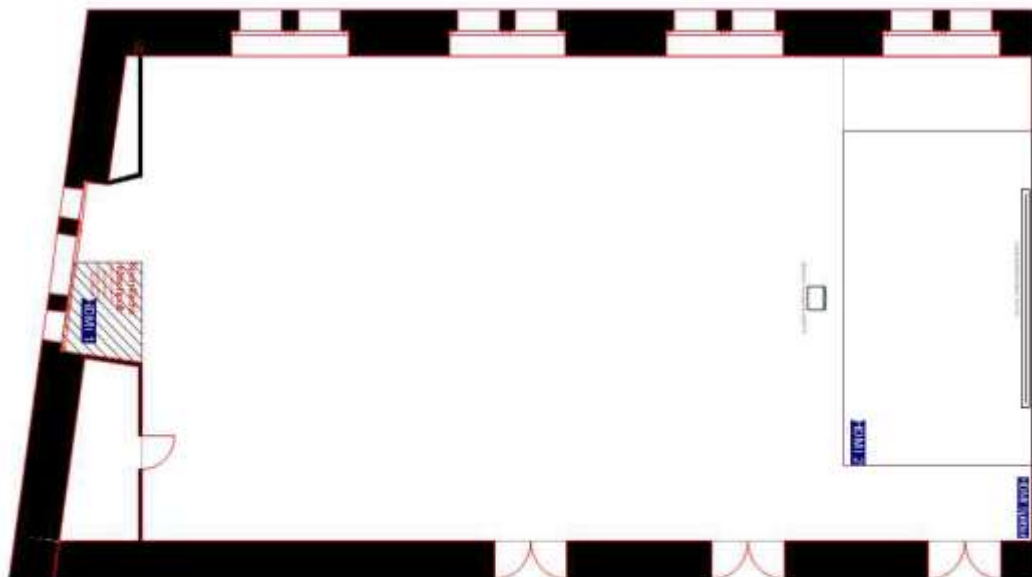
Switch Box HDMI

Notebook Windows

Speaker monitor

## MAP / CROSS-SECTION

12  
—  
22



# AUDIO SPECIFICATIONS

## AUDIO MAIN PA LEFT AND RIGHT

6x L-Acoustics A 10i Wide (each side flown as vertical hang 3x AIOi)

## AUDIO CENTER FILL

2x L-Acoustics X Series XB

## AUDIO SIDE FILL

2x L-Acoustics KS21 + A15 Wide incl. Amp (Additional)

## AUDIO MONITORING

4x HK Audio Premium PR:O 08 (Additional)

## AUDIO SYSTEM

2x Amping L-Acoustics LA4X

1x Midas DL16 (Stagebox 16/8)

## AUDIO FOH

1x Ethercon Cat7 from FOH to Stage Left

1x Midas M32C (Rack Unit Tablet Control)

1x Midas M32R (Additional)

## AUDIO WIRELESS

2x Sennheiser EW500

## HEARING LOOP

The *Weisse Saal* is equipped with an induction loop.

## SOUNDCHECK / SOUND LEVEL LIMITATIONS

The earliest time at which a soundcheck can take place must be clarified with the *Volkshaus*.

Events with a sound level between 93 and 96 decibels must be reported to the authorities. Events with a sound level between 96 and 100 decibels must be reported to the authorities and recorded/documented.

Further information: [🔗 Schall- und Laserverordnung](#)

# LIGHTING SPECIFICATIONS

We offer a small and large lighting package. The small package includes all the lights installed in the room, while the large package includes additional lights such as the PAR Cameo Flat Pro G12 or the fog machine.

## LIGHTING PACKAGE STAGE

4x JB Lighting P10

8x Elation KL Fresnel 4

4x JB P5 Beamspot

8x LED PAR Cameo Flat Pro G12 (Additional)

## LIGHTING ROOM

4x Chandelier

3x LED Ring

## LIGHTING SYSTEM

1x ELC dmXLAN node3

1x DMX Splitter Cameo SB 8.3

1x Ethercon Cat7 from FOH to Stage Left

## LIGHTING FOH

1x Lightdesk ChamSys QuickQ 20

## FOG

The use of stage fog is possible and included in the large lighting package.

# LIGHTING TECH SHEETS

15  
—  
22

<b>PROJECT</b>	
Venue Specs Weisser Saal	
<b>LAYOUT TITLE</b>	
Light   Fixture Patch Stage DMX	
<b>ROOM   POSITION</b>	
Theatersaal	
<b>VENUE ADDRESS</b>	
Volkshaus Zürich Staufferstrasse 60 CH- 8004 Zürich.	
<b>ISSUE DATE</b>	
24.02.2020	
<b>SIZE</b>	<b>SCALE</b>
D1N A3	1:50
<b>DRAW BY</b>	<b>LAYOUT NO.</b>
M Suter	403
<b>LIGHTING FIXTURES</b>	
	JB lighting P10 4 DMX: Mode 1 Standard, 40 Channels
	JB Lighting P5 4 DMX: Mode 2, 32 Channels
	Elation KL Fresnel 4 DMX: Mode 1CH, 1 Channels
	Cameo Flat Pro 12 S2 6 DMX: Mode 14CH, 14 Channels
	LED RING WWCW 3 DMX: 2 Channels
	standzeller 4 DMX: 1 Channels

**VOLKS HAUS**  
Volkshaus Zürich | Staufferstrasse 60 | 8004 Zürich  
 +41 43 31 84 84 | www.volkshaus.ch | info@volkshaus.ch

**FOH I PATCHLIST VOLKSHAUS ZÜRICH WEISSER SAAL**
**STAGE**

ID	Univ	DMX	Fixture Name	Mode	Footprint	Position
<b>Elation KL Fresnel 4</b>				<b>Count: 8</b>		
101	1	101	Elation KL Fresnel 4	1ch	1	LX 2 DS
102	1	102	Elation KL Fresnel 4	1ch	1	LX 2 DS
103	1	103	Elation KL Fresnel 4	1ch	1	LX 2 DS
104	1	104	Elation KL Fresnel 4	1ch	1	LX 2 DS
105	1	105	Elation KL Fresnel 4	1ch	1	LX 2 DS
106	1	106	Elation KL Fresnel 4	1ch	1	LX 2 DS
107	1	107	Elation KL Fresnel 4	1ch	1	LX 2 DS
108	1	108	Elation KL Fresnel 4	1ch	1	LX 2 DS
<b>JB-Lighting P10</b>				<b>Count: 4</b>		
201	1	200	JB-Lighting P10	Mode 1	40	LX 1 Front
202	1	240	JB-Lighting P10	Mode 1	40	LX 1 Front
203	1	280	JB-Lighting P10	Mode 1	40	LX 1 Front
204	1	320	JB-Lighting P10	Mode 1	40	LX 1 Front
<b>JB-Lighting P5</b>				<b>Count: 4</b>		
301	2	201	JB-Lighting P5	Mode 2	32	LX 3 US
302	2	233	JB-Lighting P5	Mode 2	32	LX 3 US
303	2	265	JB-Lighting P5	Mode 2	32	LX 3 US
304	2	297	JB-Lighting P5	Mode 2	32	LX 3 US
<b>Cameo Flat Pro 12 G2</b>				<b>Count: 8</b>		
401	2	1	Cameo Flat Pro 12 G2	14 Channel	14	Floor (Additional)
402	2	15	Cameo Flat Pro 12 G2	14 Channel	14	Floor (Additional)
403	2	29	Cameo Flat Pro 12 G2	14 Channel	14	Floor (Additional)
404	2	43	Cameo Flat Pro 12 G2	14 Channel	14	Floor (Additional)
405	2	57	Cameo Flat Pro 12 G2	14 Channel	14	Floor (Additional)
406	2	71	Cameo Flat Pro 12 G2	14 Channel	14	Floor (Additional)
407	2	85	Cameo Flat Pro 12 G2	14 Channel	14	Floor (Additional)
408	2	99	Cameo Flat Pro 12 G2	14 Channel	14	Floor (Additional)

**SYSTEM I PATCHLIST VOLKSHAUS ZÜRICH WEISSER SAAL**
**HOUSELIGHT**

ID	Univ	DMX	Fixture Name	Mode	Footprint	Position
<b>LED RING WW/CW</b>				<b>Count: 3</b>		
19	1	19	LED RING CW	Dimmer	1	Roof
20	1	20	LED RING WW	Dimmer	1	Roof
<b>Chandelier</b>				<b>Count: 4</b>		
25	1	25	Chandelier	Dimmer	1	Roof
26	1	26	Chandelier	Dimmer	1	Roof





**SYSTEM RACK LIGHT / AUDIO**

**FOH**

**ELC Node / dmXLAN node 3**  
 Location: Rack USL  
 NAME: VHZ Node 4  
 Protocol: ArtNet  
 IP Address: 2.168.11.11 / 8  
 DMX Port D1: Universe 1  
 DMX Port D2: Universe 2  
 DMX Port D3: user defined

**DMX SPLITTER / Cameo 9B8.3**  
 Location: Rack USL  
 NAME: Splitter 1  
 DMX Universe: Universe 1



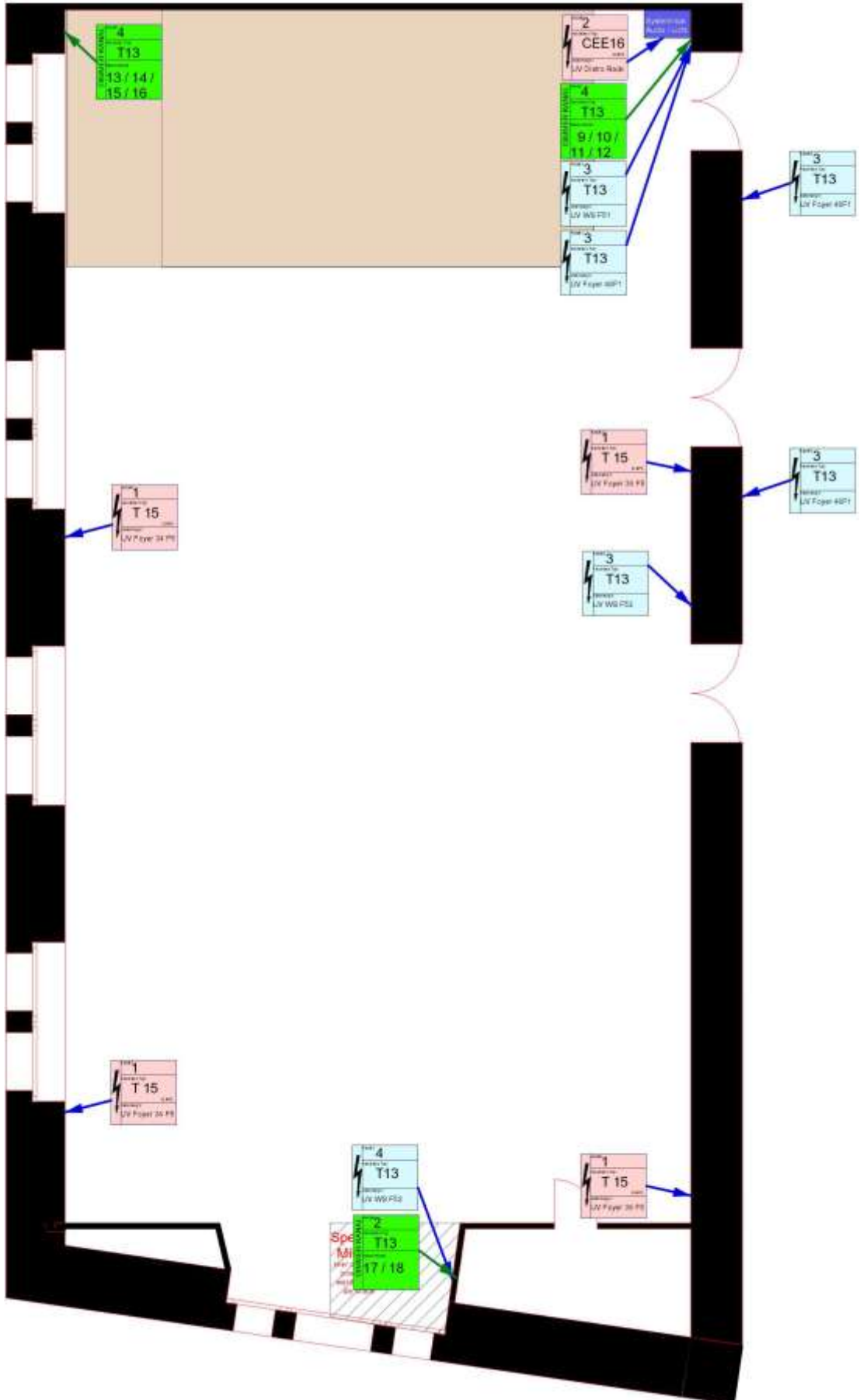
**Guest Console IP Range**  
 Guest 01 :  
 IP / ArtNet: 2.168.10.xxx / 8

**ChamSys QuickQ 20 | House Console | FOH**  
 IP Address: 2.168.11.1 / 8

1x Ethercon Cat7 Audio (Rack USL -> FOH)

1x Ethercon Cat7 SPARE Free to use (Rack USL -> FOH)

# POWER



18  
22

## AREA / PARKING

The Helvetiaplatz parking deck is located nearby at Molkenstrasse 5/9, 8004 Zurich.

[📍 Parking Deck Helvetiaplatz | Stadt Zürich](#)

You may use the sidewalk in front of *Stauffacherstrasse 57* for quick loading and unloading. Vehicles must not be left there.

There is a backstage entrance at the rear of the building; however, it can only be opened from the inside and is not equipped with an elevator.



# IMPRESSIONS



Event setup with projector, tables, lectern and additional LED pars.

20  
—  
22



Sofa, armchair and mood lighting (additional LED pars).



View from stage



Sample dressing room located in Room 23 on the second floor.



View from stage with JB Lighting P10 Profiles.

22  
—  
22



Stage with additional LED PAR Cameo Fiat Pro G12 & LED Bowls.